

Omnibus Essential Fish Habitat Amendment 2 Draft Environmental Impact Statement

Summary of alternatives and enforcement considerations

New England Fishery Management Council June 2014

This document provides a summary of the spatial management alternatives included in the Draft Environmental Impact Statement/amendment document for Omnibus Essential Fish Habitat Amendment 2. An initial draft was submitted to NMFS for review on May 20, and an approved/official draft will be published this summer, likely during August. Public hearings and a comment period will follow publication of the draft, and final Council action on this amendment is currently expected to occur in November.

The Enforcement Committee commented on potential enforcement concerns related to these alternatives in June 2013. The purpose of the June 12, 2014 meeting is to review the updated alternatives and refine previous comments or provide any additional advice. Members of the public may benefit from this advice as they participate in the hearings/comment period, and the Council should consider the advice as they undertake final deliberations on this amendment later this year.

Contents

DRAFT EIS DOCUMENT STRUCTURE.....	2
VOLUME 1:.....	2
VOLUME 2:	2
VOLUME 3:	2
VOLUME 4:	2
VOLUME 5:	2
SUMMARY OF ALTERNATIVES	3
HABITAT MANAGEMENT ALTERNATIVES	3
SPAWNING MANAGEMENT ALTERNATIVES	6
DEDICATED HABITAT RESEARCH AREA (DHRA) ALTERNATIVES	7
FRAMEWORK ADJUSTMENT AND MONITORING ALTERNATIVES	7
PREVIOUS ENFORCEMENT COMMITTEE DISCUSSION	10
SUMMARY LIST OF MANAGEMENT ALTERNATIVES AND COMPONENT AREAS.....	13
MAPS	20

Draft EIS document structure

The draft Environmental Impact Statement is organized into five volumes as follows.

The information in this document comes primarily from Volume 3, Section 2. Enforcement Committee members and Advisors are encouraged to review this section if additional details about the alternatives are required beyond what is in this summary document. See http://www.nefmc.org/habitat/planamen/efh_amend_2_DEIS/OA2%20EIS%20Vol3%20-%20May%2020%202014.pdf, pages 33-131. Other volumes/sections may be found at www.nefmc.org/habitat.

Volume 1:

- **Section 1:** Executive summary
- **Section 2:** Contents of volume
- **Section 3:** Need and purpose for action, goals and objectives, background
- **Section 4:** Affected environment/description of valued ecosystem components

Volume 2:

- **Section 1:** Contents of volume
- **Section 2:** EFH and HAPC designation alternatives
- **Section 3:** Environmental impacts of EFH and HAPC designation alternatives

Volume 3:

- **Section 1:** Contents of volume
- **Section 2:** Spatial management alternatives (descriptions, maps, and rationales)
- **Section 3:** Considered and rejected spatial management alternatives
- **Section 4:** Environmental impacts of spatial management alternatives

Volume 4:

- **Section 1:** Contents of volume
- **Section 2:** Cumulative effects
- **Section 3:** Compliance with MSA, including EFH provisions of MSA and associated EFH regulations (to be written for FEIS)
- **Section 4:** Compliance with NEPA (will be completed for FEIS)
- **Section 5:** Compliance with other applicable law (to be written for FEIS)

Volume 5:

- **Appendices**

Summary of alternatives

This section summarizes the spatial management alternatives included in the habitat amendment. The Council's preferred alternatives (February 2014) are identified as such. Alternative 1 for any given alternative type and region is always No Action. At the end of this section, combined maps of the No Action and preferred alternatives are provided.

Habitat Management alternatives

Habitat Management Alternatives are identified within five sub-regions, Eastern GOM, Central GOM, Western GOM, Georges Bank, and Great South Channel/Southern New England. Fishing restriction measures focus on mobile bottom-tending gears, although restrictions on other gear types are contemplated in some instances. The areas would be managed year-round.

Volume 3, Section 2.1.1: Eastern Gulf of Maine

Alternatives under consideration

1. No action (there are currently no habitat management areas)
2. Large Eastern Maine and Machias (**Preferred, Options 1 and 5**)
3. Small Eastern Maine, Machias, and Toothaker Ridge

Fishing restriction options, Alternatives 2 and 3

- Option 1, complete restrictions on use of mobile bottom-tending gears
- Option 2, restrictions on the use of mobile bottom-tending gear with an exemption for hydraulic clam dredges
- Option 3, a requirement that bottom trawl vessels use ground cables modified with 20 centimeter diameter elevating disks spaced at 5 fathoms, with a length per side capped at 45 fathoms. Use of dredges would be permitted.
- Option 4, a requirement that bottom trawl vessels eliminate ground cables entirely and cap bridle lengths at 30 fathoms per side. Use of dredges would be permitted.
- Option 5, complete restrictions on use of gears capable of catching groundfish (**Alt 2 only**).

The preferred alternative for this sub-region removes the Cashes Ledge Closure Area (groundfish closure). Presumably this would mean that the area would be removed for spawning purposes as well.

Volume 3, Section 2.1.2: Central Gulf of Maine

Alternatives under consideration

1. No action: Cashes Groundfish and Habitat, Jeffreys Bank Habitat
2. No Habitat Management Areas
3. Modified Cashes, Modified Jeffreys Bank, Ammen Rock, Fippennies Ledge, Platts Bank
4. Modified Cashes, Modified Jeffreys Bank, Ammen Rock (**Preferred, Option 1**)

Fishing restriction options, Alternative 3 and 4, except Ammen Rock Area

- Option 1, complete restrictions on use of mobile bottom-tending gears
- Option 2, restrictions on the use of mobile bottom-tending gear with an exemption for hydraulic clam dredges
- Option 3, a requirement that bottom trawl vessels use ground cables modified with 20 centimeter diameter elevating disks spaced at 5 fathoms, with a length per side capped at 45 fathoms. Use of dredges would be permitted.

- Option 4, a requirement that bottom trawl vessels eliminate ground cables entirely and cap bridle lengths at 30 fathoms per side. Use of dredges would be permitted.

Note that NH state waters are closed to mobile bottom tending gears year round. NH state waters adjoin the southern part of the Large and Small Bigelow Bight Areas in WGOM Alternatives 3, 4, and 5. Additional state waters restrictions are described in the DEIS, Volume 1, Section 4.8.

Volume 3, Section 2.1.3: Western Gulf of Maine

Alternatives under consideration

1. No action: WGOM groundfish and habitat closures (**Preferred**)
2. No Habitat Management Areas
3. Large Bigelow Bight, Large Stellwagen
4. Large Bigelow Bight, Small Stellwagen, Jeffreys Ledge
5. Small Bigelow Bight, Small Stellwagen, Jeffreys Ledge
6. Large Stellwagen
7. Make roller gear area a habitat measure (7a), or apply in an alternative area (7b) (**7a preferred**)
8. Exempt shrimp trawl gear from the northwest corner of the WGOM habitat closure (**Preferred**)

Fishing restriction options, alternatives 3, 4, 5, and 6

- Option 1, complete restrictions on use of mobile bottom-tending gears
- Option 2, restrictions on the use of mobile bottom-tending gear with an exemption for hydraulic clam dredges
- Option 3, a requirement that bottom trawl vessels use ground cables modified with 20 centimeter diameter elevating disks spaced at 5 fathoms, with a length per side capped at 45 fathoms. Use of dredges would be permitted.
- Option 4, a requirement that bottom trawl vessels eliminate ground cables entirely and cap bridle lengths at 30 fathoms per side. Use of dredges would be permitted.

No preferred alternatives have been identified for the Georges Bank sub-region at this time.

Volume 3, Section 2.1.4: Georges Bank

Alternatives under consideration

1. No action: CAI and CAII groundfish and habitat closures
2. No Habitat Management Areas
3. Northern Edge
4. Northern Edge and Georges Shoal gear modification area
5. Northern Georges gear modification area, Georges Shoal 1 MBTG closure
6. EFH Extended 1 (6A) and EFH Extended 2 (6B)
7. Georges Shoal 2 MBTG closure, EFH South MBTG closure
8. Northern Georges MBTG closure

Fishing restriction options for Northern Edge Area and EFH Extended Areas 1 and 2

- Option 1, complete restrictions on use of mobile bottom-tending gears
- Option 2, restrictions on the use of mobile bottom-tending gear with an exemption for hydraulic

clam dredges

- Option 3, a requirement that bottom trawl vessels use ground cables modified with 20 centimeter diameter elevating disks spaced at 5 fathoms, with a length per side capped at 45 fathoms. Use of dredges would be permitted.
- Option 4, a requirement that bottom trawl vessels eliminate ground cables entirely and cap bridle lengths at 30 fathoms per side. Use of dredges would be permitted.

Fishing restriction options for MBTG closures (Alts 5, 7, 8)

- Option 1, complete restrictions on use of mobile bottom-tending gears
- Option 2, restrictions on the use of mobile bottom-tending gear with an exemption for hydraulic clam dredges

Fishing restriction options for gear modification areas (Alts 4, 5)

- Option 3, a requirement that bottom trawl vessels use ground cables modified with 20 centimeter diameter elevating disks spaced at 5 fathoms, with a length per side capped at 45 fathoms. Use of dredges would be permitted.
- Option 4, a requirement that bottom trawl vessels eliminate ground cables entirely and cap bridle lengths at 30 fathoms per side. Use of dredges would be permitted.

No preferred alternatives have been identified for the Great South Channel/Southern New England sub-region at this time.

Volume 3, Section 2.1.5: Great South Channel/Southern New England

Alternatives under consideration

1. No action: NLCA and NL habitat closure
2. No Habitat Management Areas
3. Great South Channel East and Cox Ledge
4. Great South Channel and Cox Ledge
5. Nantucket Shoals and Cox Ledge
6. Nantucket Shoals West MBTG closure, GSC gear modification area, Cox Ledge

Fishing restriction options – except Alternatives 1 and 6

- Option 1, complete restrictions on use of mobile bottom-tending gears
- Option 2, restrictions on the use of mobile bottom-tending gear with an exemption for hydraulic clam dredges
- Option 3, a requirement that bottom trawl vessels use ground cables modified with 20 centimeter diameter elevating disks spaced at 5 fathoms, with a length per side capped at 45 fathoms. Use of dredges would be permitted.
- Option 4, a requirement that bottom trawl vessels eliminate ground cables entirely and cap bridle lengths at 30 fathoms per side. Use of dredges would be permitted.

Spawning Management alternatives

Spawning management alternatives are identified for two regions: Gulf of Maine and Georges Bank/Southern New England. Areas would be managed seasonally, except for current year-round areas that are part of the No Action alternative.

In the Gulf of Maine, there is a state waters closures in Massachusetts Bay from November 15-January 31 that is adjacent to the Massachusetts Bay Area proposed in this amendment (Alternatives 2 and 3). Fishing restrictions are equivalent between the state management area and the proposed Massachusetts Bay area.

The preferred habitat management alternative for this sub-region removes the Cashes Ledge Closure Area (groundfish closure). Presumably this would mean that the area would be removed for spawning purposes as well.

Volume 3, Section 2.2.1: Gulf of Maine

Alternatives under consideration

1. No action: Western Gulf of Maine and Cashes Ledge groundfish closures year round (see note above), sector and common pool rolling closures, GOM Cod Spawning Protection Area **(Preferred alternative)**
2. Sector rolling closures, GOM Cod Spawning Protection Area, Massachusetts Bay Area
3. Massachusetts Bay Area **(Preferred alternative)**

Fishing restriction options

1. Alternative 1 would include current restrictions in the existing areas
2. For Alternative 2, the Massachusetts Bay Area would have the same restrictions as the GOM Cod Spawning Protection Area, and the rolling closures would have their current restrictions (Option A), or would add recreational restrictions (Option B)
3. For Alternative 3, the Massachusetts Bay Area would have the same restrictions as the GOM Cod Spawning Protection Area

Volume 3, Section 2.2.2: Georges Bank/Southern New England

Alternatives under consideration

1. No action: CAI, CAII, NLCA year round, May seasonal closure
2. CAI and CAII as spawning closures February 1-April 15 **(Preferred alternative)**
3. CAI North and CAII as spawning closures February 1-April 15

Fishing restriction options

- Alternative 1 would include current restrictions in the existing areas
- Alternatives 2 and 3 would have three options:
 - Option A: Commercial gears capable of catching groundfish
 - Option B: Commercial and recreational gears capable of catching groundfish **(Preferred alternative)**
 - Option C: Exempt scallop dredges from any restrictions

Dedicated Habitat Research Area (DHRA) alternatives

Areas would be managed year-round.

Volume 3, Section 2.3.1: Alt 1

No Action/No DHRA designations

Volume 3, Section 2.3.2: Alt 2

Designate Eastern Maine DHRA and close to MBTG (**Preferred alternative**)

Volume 3, Section 2.3.3: Alt 3

Designate Stellwagen DHRA and maintain current restrictions throughout, i.e. no MBTG, no longlines, gillnets. If a reference area is designated, there would be no recreational groundfishing in reference sub-area.

- Option A: Southern Ref Area
- Option B: Northern Ref Area (**Preferred alternative**)
- Option C: No Ref Area

Volume 3, Section 2.3.4: Alt 4

Designate Georges Bank DHRA and close to MBTG (**Preferred alternative**)

Volume 3, Section 2.3.5: Alt 5

Defines sunset provision for DHRAs (**Preferred alternative**)

Framework adjustment and monitoring alternatives

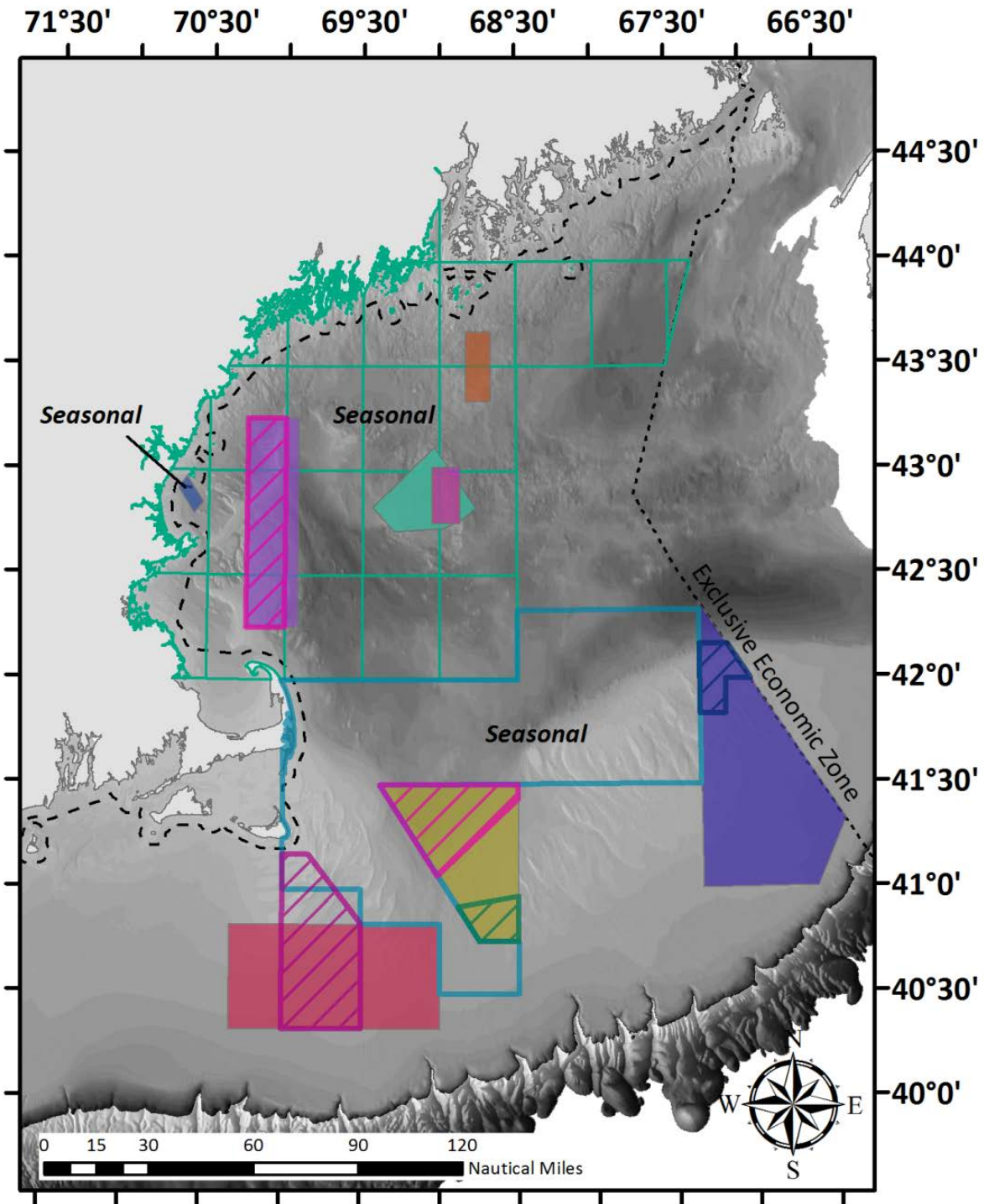
A regular framework adjustment process would ensure that reevaluation of spatial management performance and effects on groundfish productivity would be conducted in a holistic rather than piecemeal fashion. It also establishes the expectation that habitat and groundfish spawning management via area-based fishery restriction will be periodically reviewed so that the restricted areas that are selected are those areas that provide the greatest potential for protecting essential fish habitat and helping stocks rebuild. Current sources of data will likely not be sufficient to monitor the proposed closed areas due to their small sizes. Identification of monitoring and research needs specific to spatial management issues would promote and enhance collection of data and scientific analyses that would inform future decisions.

Volume 3, Section 2.4:

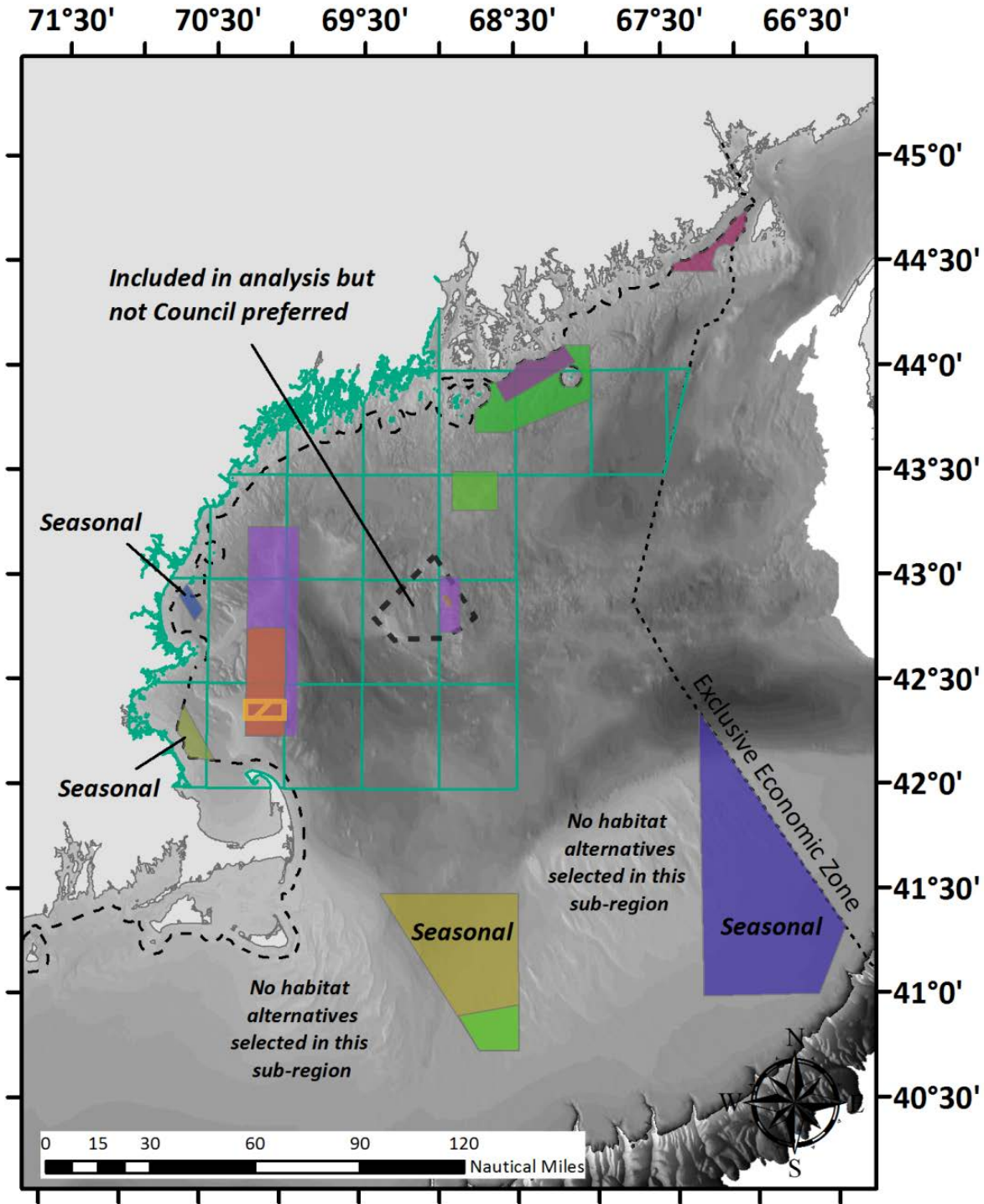
Alternatives under consideration

1. Current ad-hoc initiation of actions to adjust of spatial management measures, current monitoring
2. Planned framework adjustment process, request for additional monitoring (**Preferred Alternative**)
 - Specify additional spatial management measures as frameworkable in various NEFMC FMPs,
 - Develop a regular, strategic process to review the effectiveness of spatial management measures, and
 - Define a series of research priorities related to the review and development of spatial management measures.
 - A ten year review is timeframe identified in the document

No Action management areas



Preferred alternative management areas – note that preferred habitat management alternatives have not been selected for the Georges Bank or Great South Channel/Southern New England sub-regions.



Previous Enforcement Committee discussion

The Enforcement Committee last discussed these alternatives in June 2013. Since then some alternatives have been added or modified.

Topic	June 2013 VMS/Enforcement Committee comments	Questions for June 2014 meeting/notes
<p>Areas closed to some gear types but not others</p>	<p>Multiple other gear types allowed into areas closed to mobile bottom tending gear are problematic, although this is currently the norm.</p> <p>Allowing the use of distinct types of gear, on certain trips, in certain closed areas is enforceable only with at-sea boardings to assure that none of the gear is used illegally.</p> <p>VMS may track all of these gears through the area, and all VMS vessels must declare if they will use trawl, gillnet, or hook gear, but VMS cannot identify gear details such as cable type and length.</p>	<p>Every management area in this amendment is closed to some gears but not others – the most comprehensive restriction is in the Ammen Rock area (subset of Cashes Ledge). Many but not all of the excluded vessels use VMS.</p>
<p>Gear modification options for habitat management areas</p>	<p>With respect to bottom trawls, prohibiting the use of ground cables (Option 4) is only enforceable with at-sea boardings, which are limited in number. Requiring disks on the cables, or specifying certain lengths of cable may be more enforceable (Option 3).</p> <p>If a certification program to mark the approved ground cables is developed, then a procedure for compliance checks must be developed and implemented concurrently.</p>	<p>The gear modification options have thus far not been identified as preferred by the Council</p>
<p>Area size or shape</p>	<p>The smallest closed area is 13 square NM (Fippennies), but there is more concern about the shape of the area, which is a parallelogram rather than a square, from an enforcement standpoint.</p>	<p>Many areas include diagonal boundaries that do not follow lines of latitude or longitude. Is this a universal concern about angled boundaries?</p>

Omnibus EFH Amendment 2

Topic	June 2013 VMS/Enforcement Committee comments	Questions for June 2014 meeting/notes
Area size or shape	For VMS to be as effective as in the past, some assurance should be made for closed areas large enough so that a groundfish vessel on hourly reporting has a reasonable chance of positioning while inside the area	What size area does this correspond to?
Area size or shape	Both fishermen and enforcement find it very difficult to determine position relative to a curved, rather than straight, area boundary. Curved boundaries of some closed areas could be straightened to be more enforceable, with little impact on habitat protection.	The only curved boundaries are along the state/federal waters boundary.
Enforcement mechanisms	Some of the habitat management areas represent locations that are not easily towable by mobile bottom tending gear. This may make them somewhat self-enforcing, however, they are also a hedge against future, new-technology operations. Such closures would be monitored by VMS and USCG over-flights, to assure they continue as non-fished.	There is likely considerable variation by management area and vessel in terms of the extent to which habitat management areas are not fishable.
Enforcement mechanisms	VMS positions detected within a closed area <u>and</u> other corroborating evidence are necessary to make a case.	Can the Committee expand upon this? What does other corroborating evidence mean?
Coordination with states	Circular holes inside some closed areas should be closed, by coordinating with existing state regulations. The closed area program should take advantage of the fact that the states can regulate all fishing vessels, not just their state registered vessels, within their respective state waters.	The Council has thus far decided to manage in federal waters only on a year-round basis, hence the irregular boundaries on the shoreward sides of the management areas.

In June 2013, the Enforcement Committee and Advisors approved two motions unanimously:

- The committee has significant concerns about the enforceability of a no ground cable restriction
- The committee expresses interest in further information on the reduced impact (raised) ground cables to study their enforceability.

Omnibus EFH Amendment 2

Summary list of management alternatives and component areas

Habitat management alternatives:

Sub-region	Alternative #	Areas included	Fishing restriction options	No Action	Preferred	Other
Eastern Gulf of Maine	1	None	None	X		
	2	Large Eastern Maine HMA, Machias HMA	Options 1-5		X	
	3	Small Eastern Maine HMA, Machias HMA, Toothaker Ridge HMA	Options 1-4			X
Central Gulf of Maine	1	Jeffreys Bank Habitat Closure Area, Cashes Ledge Habitat Closure Area, Cashes Ledge Closed Area	Current measures	X		
	2	None	None			X
	3	Modified Jeffreys Bank EFH HMA, Modified Cashes Ledge EFH HMA, Ammen Rock HMA, Fippennies Ledge HMA, Platts Bank HMA	1-4, Ammen Rock closed to all fishing			X
	4	Modified Jeffreys Bank EFH HMA, Modified Cashes Ledge EFH HMA, Ammen Rock HMA	1-4, Ammen Rock closed to all fishing		X	
Western Gulf of Maine	1	Western Gulf of Maine Habitat Closure Area, Western Gulf of Maine Closed Area	Current measures	X	X	
	2	None	None			X
	3	Large Bigelow Bight HMA, Large Stellwagen HMA	Options 1-4			X
	4	Large Bigelow Bight HMA, Small Stellwagen HMA, Jeffreys Ledge HMA	Options 1-4			X
	5	Small Bigelow Bight HMA, Small Stellwagen HMA, Jeffreys Ledge HMA	Options 1-4			X
	6	Large Stellwagen HMA	Options 1-4			X
	7a	Inshore Roller Gear Restricted Area	Trawl roller gear limited to 12 inches diameter		X	
	7b	Alternate Roller Gear Restricted Area	Trawl roller gear limited to 12 inches diameter			X
	8	WGOM Shrimp Trawl Exemption Area	Shrimp trawls exempted from mobile bottom-tending gear closure		X	
Georges Bank	1	CAI and CAII EFH, CAI and CAII GF	Current measures	X		
	2	None	None			X

Omnibus EFH Amendment 2

Sub-region	Alternative #	Areas included	Fishing restriction options	No Action	Preferred	Other
	3	Northern Edge HMA	Options 1-4			X
	4	Northern Edge HMA and Georges Shoal Gear Modified Area	NE: 1-4, GS: 3-4			X
	5	Georges Shoal 1 MBTG HMA and Northern Georges Gear Modified Area	GS: 1-2, NG: 3-4			X
	6a	EFH Expanded 1 HMA	Options 1-4			X
	6b	EFH Expanded 2 HMA	Options 1-4			X
	7	Georges Shoal 2 MBTG HMA and EFH South MBTG HMA	Options 1-2			X
	8	Northern Georges MBTG HMA	Options 1-2			X
Great South Channel/S. New England	1	Nantucket Lightship Habitat Closure Area, Nantucket Lightship Closed Area	Current measures	X		
	2	None	None			X
	3	Great South Channel East HMA and Cox Ledge HMA	Options 1-4			X
	4	Great South Channel HMA and Cox Ledge HMA	Options 1-4			X
	5	Nantucket Shoals HMA and Cox Ledge HMA	Options 1-4			X
	6	Nantucket Shoals West MBTG HMA, Great South Channel Gear Modified Area, Cox Ledge HMA	NSW: 1-2, GSC: 3-4, CL: 1-4			X

Omnibus EFH Amendment 2

Spawning management alternatives:

Region	Alternative #	Areas included	Fishing restriction options	No Action	Preferred	Other
Gulf of Maine	1	Western Gulf of Maine Closure Area, Cashes Ledge Closure Area, Sector rolling closures, common pool rolling closures, GOM Cod Spawning Protection Area	Current measures	X	X	
	2a	Sector rolling closures, GOM Cod Spawning Protection Area, Massachusetts Bay Cod Spawning Protection Area	Option 5 (recreational gears in GOM and MassBay Cod Spawning Protection Areas)			X
	2b	Sector rolling closures, GOM Cod Spawning Protection Area, Massachusetts Bay Cod Spawning Protection Area	Option 5 including recreational gears			X
	3	Massachusetts Bay Cod Spawning Protection Area	Option 5 including recreational gears			X
Georges Bank/Southern New England	1	Closed Areas I and II, Nantucket Lightship Closed Area, Georges Bank May Seasonal Closure Area	Current measures	X		
	2a	Closed Areas I and II	Option 5			X
	2b	Closed Areas I and II	Option 5 including recreational gears		X	
	2c	Closed Areas I and II	Scallop dredges exempt from closure			X
	3a	Closed Area I North and Closed Area II	Option 5			X
	3b	Closed Area I North and Closed Area II	Option 5 including recreational gears			X
	3c	Closed Area I North and Closed Area II	Scallop dredges exempt from closure			X

Habitat research alternatives:

Alternative #	Areas included	Fishing restriction options	No Action	Preferred	Other
1	No DHRAs designated	None	X		
2	Eastern Maine DHRA	Option 1		X	
3a	Stellwagen DHRA and southern reference area	Options 1 and 5, recreational gears capable of catching groundfish in reference area only			X
3b	Stellwagen DHRA and northern reference area	Options 1 and 5, recreational gears capable of catching groundfish in reference area only		X	
3c	Stellwagen DHRA (no reference area)	Options 1 and 5			X
4	Georges Bank DHRA	Option 1		X	
5	Applies to any DHRAs designated	DHRA sunsets after 3 years if not being used		X	

Omnibus EFH Amendment 2

Sizes of management areas (in alphabetical order by area name)

Area name	Region/sub-region	Type	No Action?	Season	Area, nm^2	Area, km^2
Alternate Roller Gear Restricted Area	Western GOM	Habitat Management Area	No	Year-round	1,209	4,147
Ammen Rock	Central GOM	Habitat Management Area	No	Year-round	4	15
Cashes Ledge Closed Area	Central GOM	Groundfish closure	Yes	Year-round	400	1,373
Cashes Ledge GF	Central GOM	Groundfish closure	Yes	Year-round	400	1,373
Cashes Ledge Habitat Closure	Central GOM	EFH closure	Yes	Year-round	129	443
Closed Area I	Georges Bank	Groundfish closure	Yes	Year-round (No Action); February 1 - April 15 (Spawning Alternative 2)	1,148	3,939
Closed Area I N	Georges Bank	Spawning area	No	February 1 - April 30	565	1,937
Closed Area I N Habitat Closure	Georges Bank	EFH closure	Yes	Year-round	565	1,937
Closed Area I S Habitat Closure	Georges Bank	EFH closure	Yes	Year-round	170	584
Closed Area II	Georges Bank	Groundfish closure	Yes	Year-round (No Action); February 1 - April 15 (Spawning Alternative 2)	2,001	6,862
Closed Area II Habitat Closure	Georges Bank	EFH closure	Yes	Year-round	187	641
Common Pool Rolling Closure, April	Gulf of Maine	Seasonal rolling closure	Yes	April	6,110	20,958
Common Pool Rolling Closure, June	Gulf of Maine	Seasonal rolling closure	Yes	June	5,113	17,537
Common Pool Rolling Closure, March	Gulf of Maine	Seasonal rolling closure	Yes	March	2,003	6,870
Common Pool Rolling Closure, May	Gulf of Maine	Seasonal rolling closure	Yes	May	6,824	23,405
Common Pool Rolling Closure, Oct-Nov	Gulf of Maine	Spawning area	Yes	October 1 - November 30	1,087	3,729
Cox Ledge 1	Southern New England	Habitat Management Area	No	Year-round	42	143
Cox Ledge 2	Southern New England	Habitat Management Area	No	Year-round	20	70
Eastern Maine DHRA	Eastern GOM	Dedicated Habitat Research Area	No	Year-round	141	483
EFH Expanded 1	Georges Bank	Habitat Management Area	No	Year-round	336	1,152

Omnibus EFH Amendment 2

Area name	Region/sub-region	Type	No Action?	Season	Area, nm^2	Area, km^2
EFH Expanded 2	Georges Bank	Habitat Management Area	No	Year-round	234	804
EFH South MBTG	Georges Bank	Habitat Management Area	No	Year-round	81	278
Fippennies Ledge	Central GOM	Habitat Management Area	No	Year-round	13	45
Georges Bank DHRA	Georges Bank	Dedicated Habitat Research Area	No	Year-round	170	584
Georges Bank Seasonal Closure Area	Georges Bank	Spawning area	Yes	May	6,374	21,862
Georges Shoal 1 MBTG	Georges Bank	Habitat Management Area	No	Year-round	270	926
Georges Shoal 2 MBTG	Georges Bank	Habitat Management Area	No	Year-round	299	1,025
Georges Shoal GMA	Georges Bank	Habitat Management Area	No	Year-round	313	1,073
GOM cod spawning protection area	Western GOM	Spawning area	Yes	April 1 - June 30	33	114
Great South Channel	Southern New England	Habitat Management Area	No	Year-round	748	2,566
Great South Channel East	Southern New England	Habitat Management Area	No	Year-round	979	3,356
Great South Channel GMA	Southern New England	Habitat Management Area	No	Year-round	671	2,301
Inshore Roller Gear Restricted Area	Western GOM	Habitat Management Area	Yes	Year-round	3,302	11,327
Jeffreys Bank Habitat Closure	Central GOM	EFH closure	Yes	Year-round	145	499
Jeffreys Ledge	Western GOM	Habitat Management Area	No	Year-round	214	733
Large Bigelow Bight	Western GOM	Habitat Management Area	No	Year-round	493	1,691
Large Eastern Maine	Eastern GOM	Habitat Management Area	No	Year-round	493	1,692
Large Stellwagen	Western GOM	Habitat Management Area	No	Year-round	343	1,177
Machias	Eastern GOM	Habitat Management Area	No	Year-round	97	334
Massachusetts Bay Cod Spawning	Western GOM	Spawning area	No	November 1 - January 31	74	254
Modified Cashes Ledge EFH	Central GOM	Habitat Management Area	No	Year-round	94	324
Modified Jeffreys Bank EFH	Central GOM	Habitat Management Area	No	Year-round	144	494
Nantucket Lightship Closed Area	Southern New England	Groundfish closure	Yes	Year-round	1,822	6,248
Nantucket Lightship Habitat Closure	Southern New England	EFH closure	Yes	Year-round	987	3,387
Nantucket Shoals	Southern New England	Habitat Management Area	No	Year-round	685	2,350
Nantucket Shoals West	Southern New England	Habitat Management Area	No	Year-round	861	2,952

Omnibus EFH Amendment 2

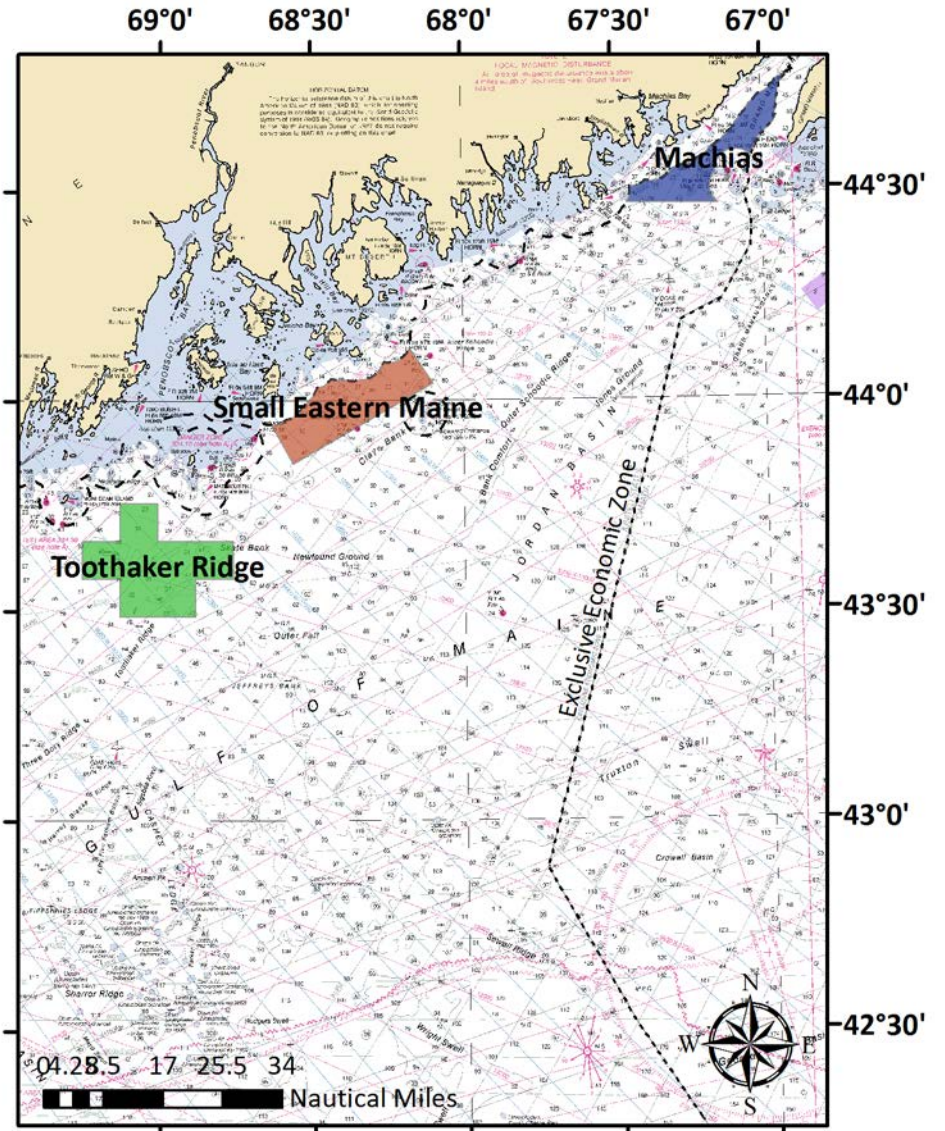
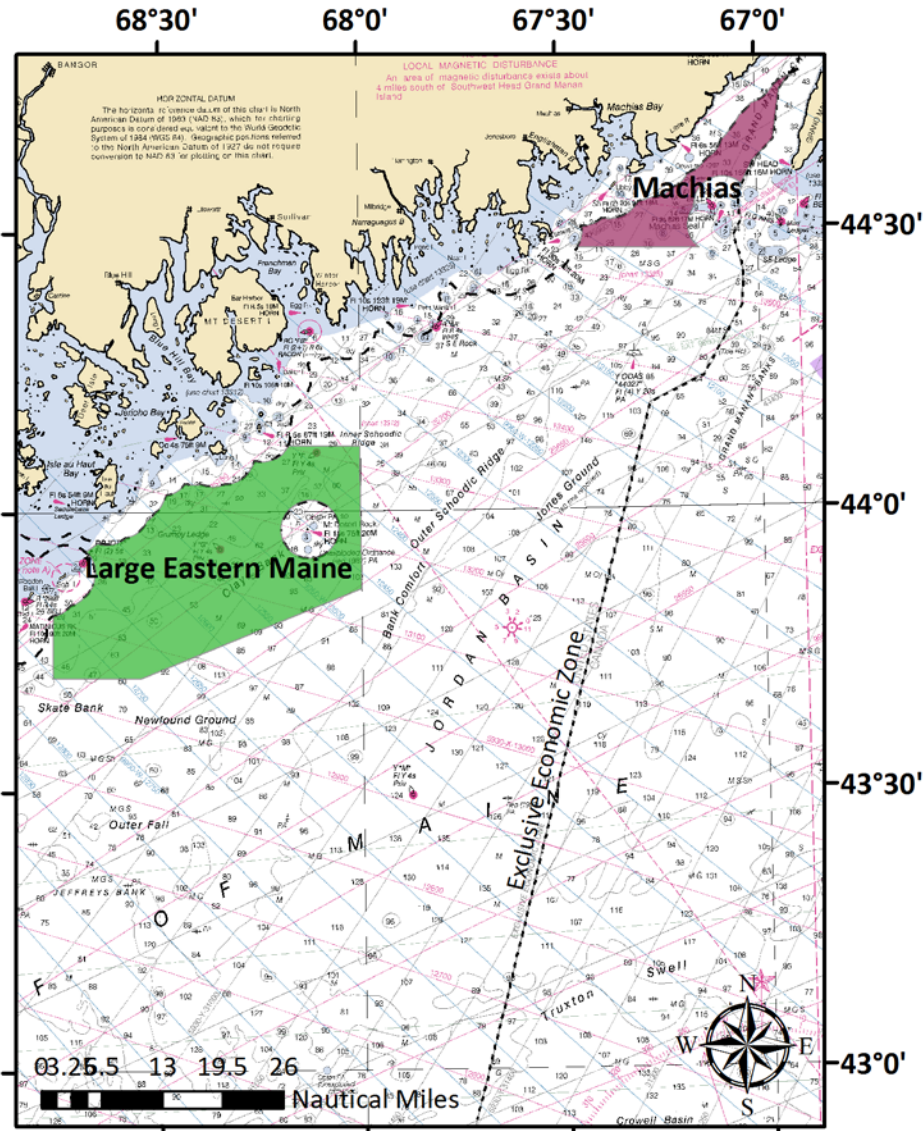
Area name	Region/sub-region	Type	No Action?	Season	Area, nm²	Area, km²
Northern Edge	Georges Bank	Habitat Management Area	No	Year-round	139	476
Northern Georges GMA	Georges Bank	Habitat Management Area	No	Year-round	1,994	6,838
Northern Georges MBTG	Georges Bank	Habitat Management Area	No	Year-round	1,396	4,788
Platts Bank 1	Central GOM	Habitat Management Area	No	Year-round	9	31
Platts Bank 2	Central GOM	Habitat Management Area	No	Year-round	12	41
Sector Rolling Closure, April	Gulf of Maine	Seasonal rolling closure	Yes	April	2,120	7,272
Sector Rolling Closure, June	Gulf of Maine	Seasonal rolling closure	Yes	June	2,043	7,007
Sector Rolling Closure, May	Gulf of Maine	Seasonal rolling closure	Yes	May	2,436	8,355
Small Bigelow Bight	Western GOM	Habitat Management Area	No	Year-round	164	561
Small Eastern Maine	Eastern GOM	Habitat Management Area	No	Year-round	141	483
Small Stellwagen	Western GOM	Habitat Management Area	No	Year-round	195	670
Stellwagen DHRA	Western GOM	Dedicated Habitat Research Area	No	Year-round	343	1,177
Stellwagen DHRA, reference area 1	Western GOM	Dedicated Habitat Research Area	No	Year-round	56	191
Stellwagen DHRA, reference area 2	Western GOM	Dedicated Habitat Research Area	No	Year-round	56	190
Toothaker Ridge	Eastern GOM	Habitat Management Area	No	Year-round	204	700
Western Gulf of Maine Closed Area	Western GOM	Groundfish closure	Yes	Year-round	883	3,030
Western Gulf of Maine Habitat Closure	Western GOM	EFH closure	Yes	Year-round	662	2,272
WGOM Shrimp Trawl Exemption Area	Western GOM	Habitat Management Area	No	Year-round	123	422

Maps

Habitat management alternatives EGOM 1, CGOM 2, WGOM 2, GB 2, and GSC-SNE 2 are not shown because they do not include any management areas. Note that scales differ between maps.

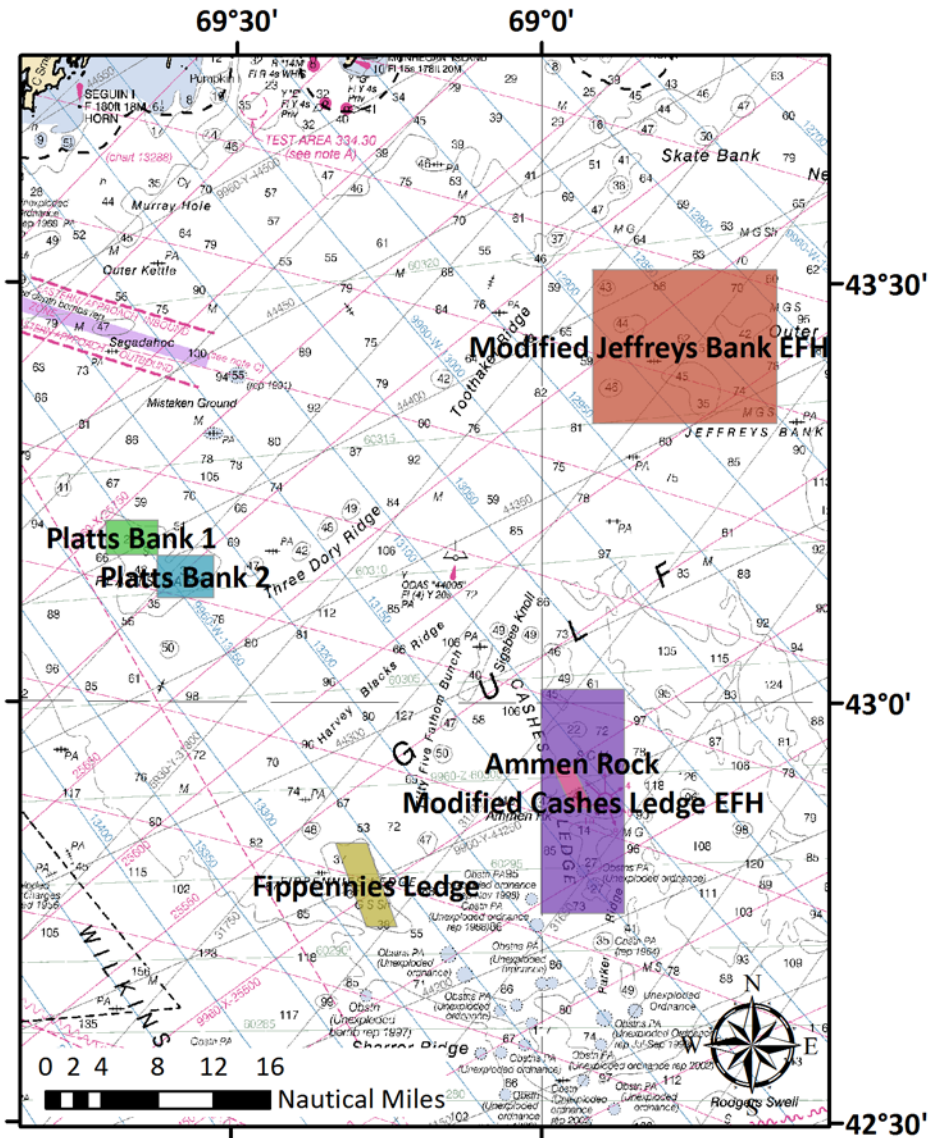
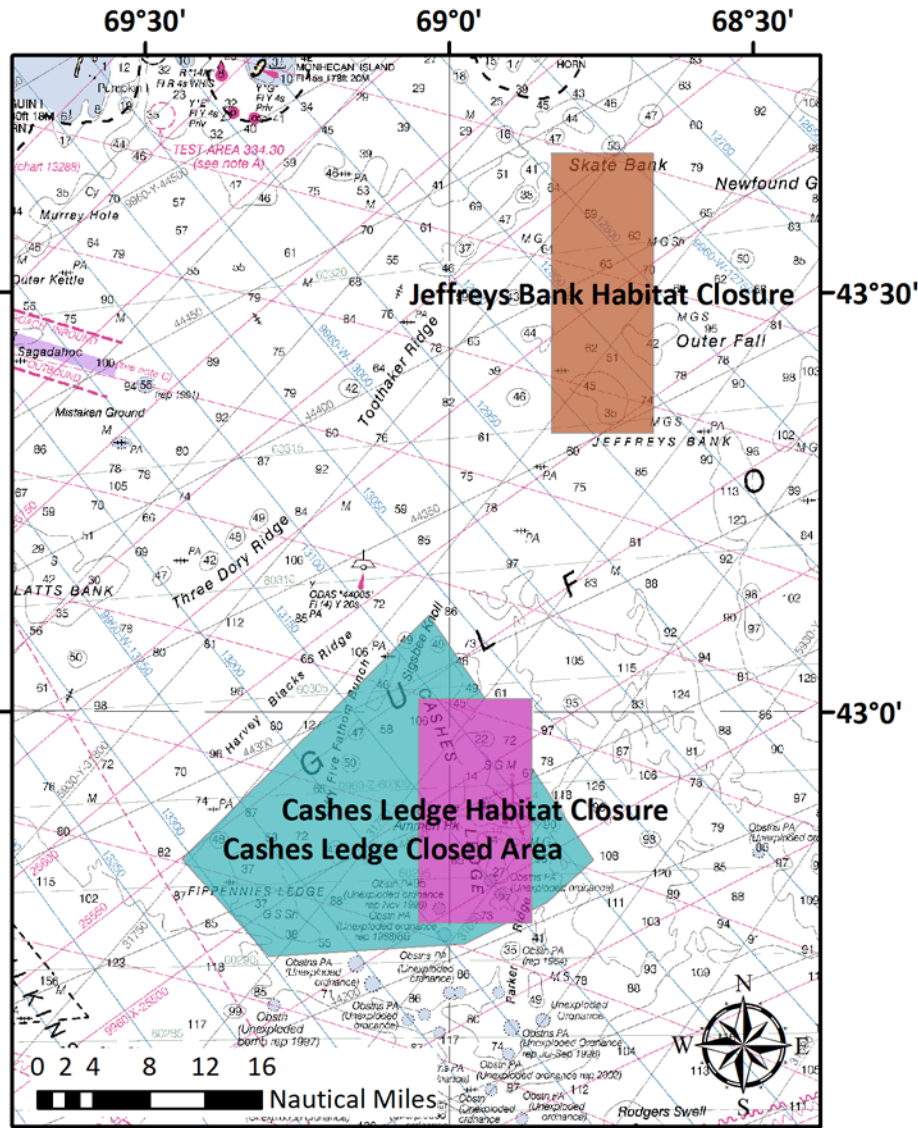
Eastern GOM Habitat Mgmt Alternative 2 (Preferred)

Eastern GOM Habitat Management Alternative 3



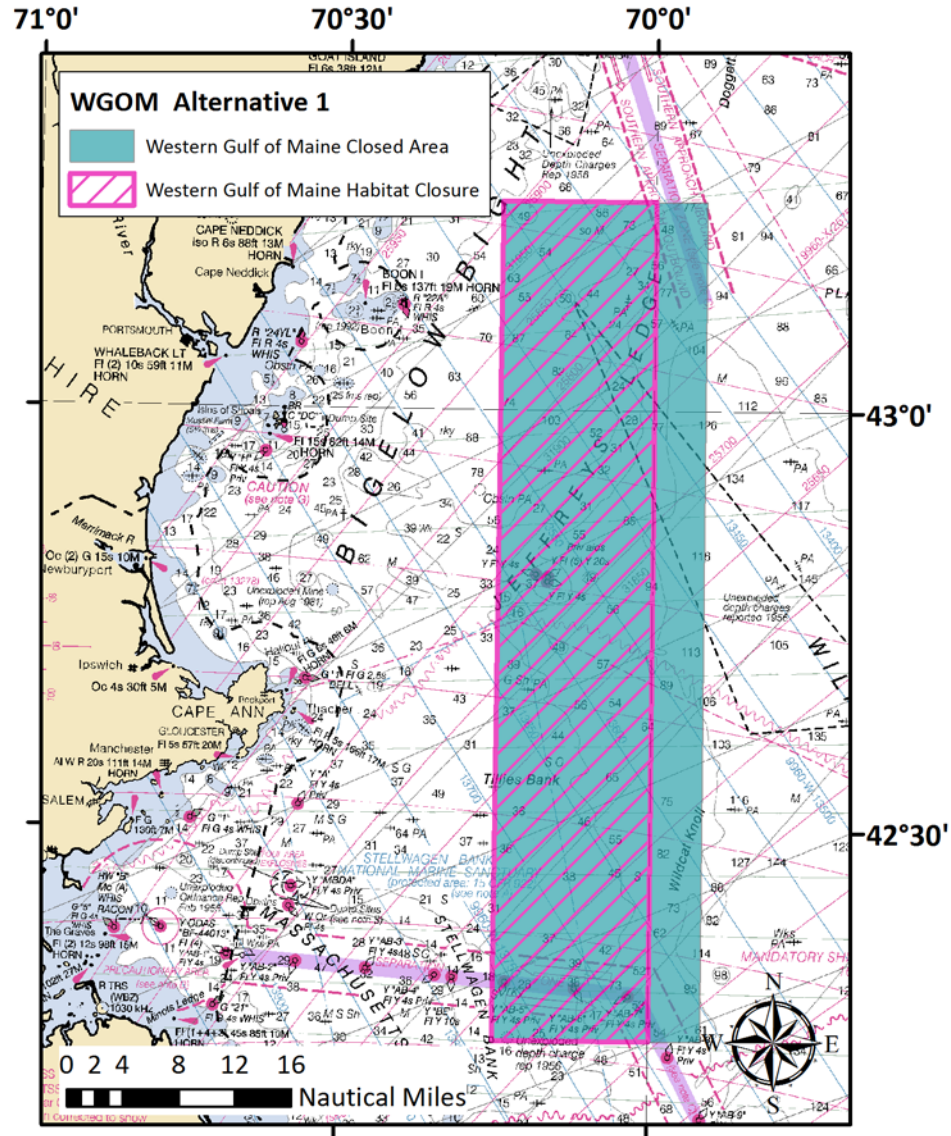
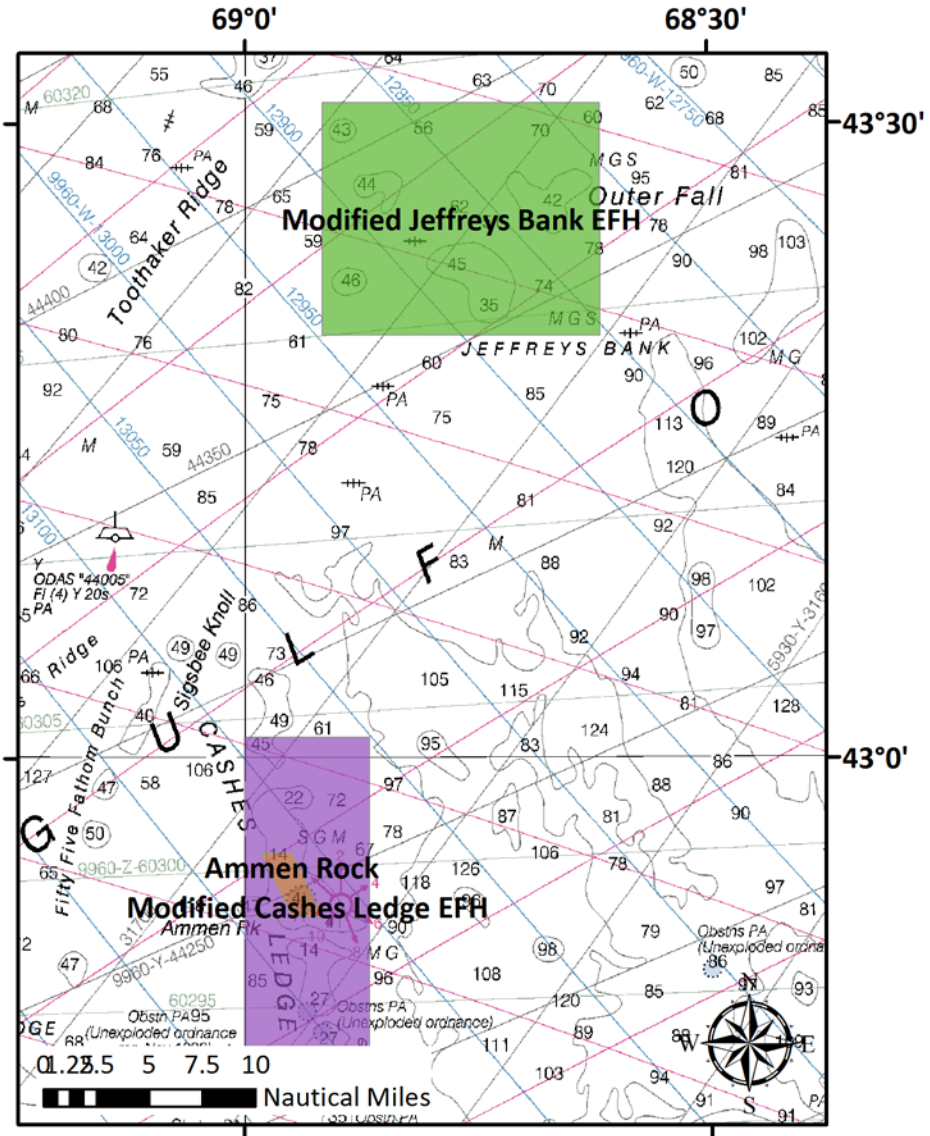
Central GOM Habitat Management Alternative 1 (No Action)

Central GOM Habitat Management Alternative 3



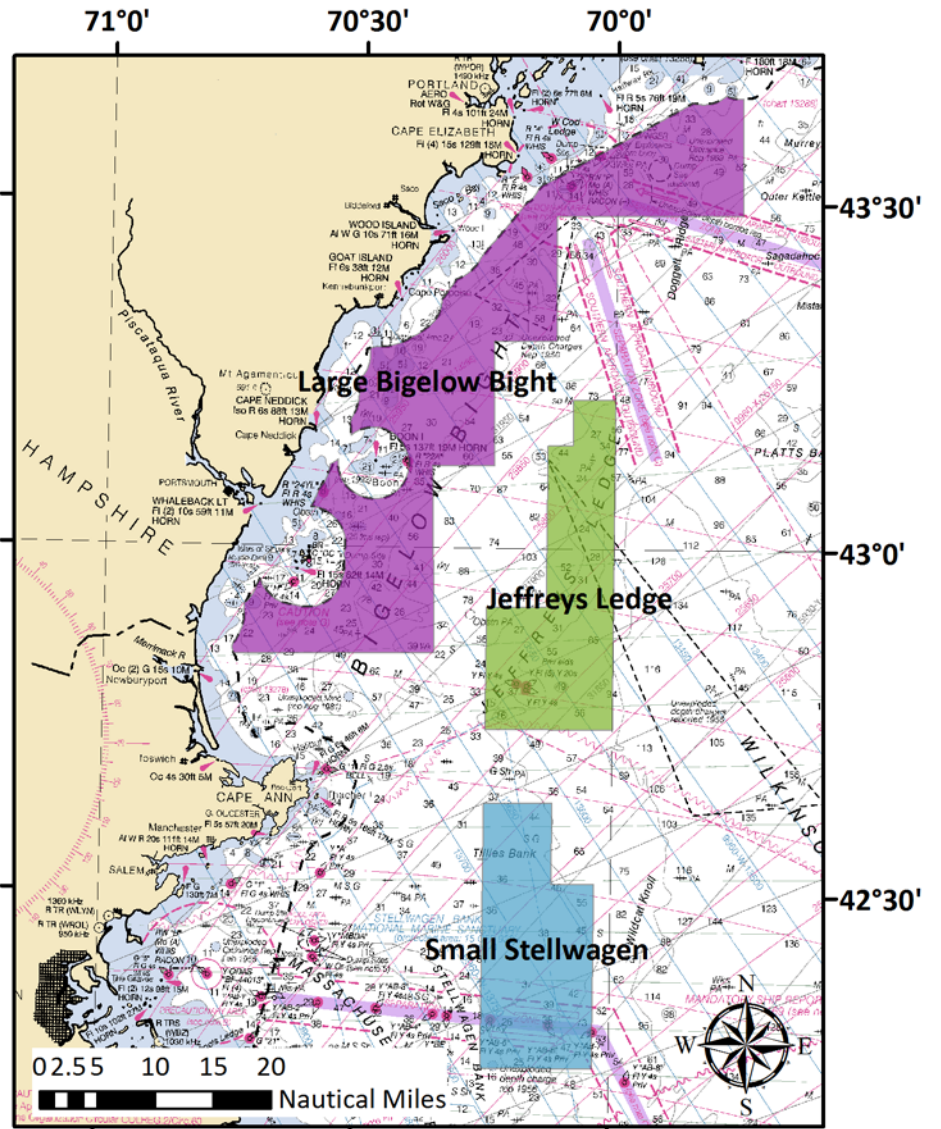
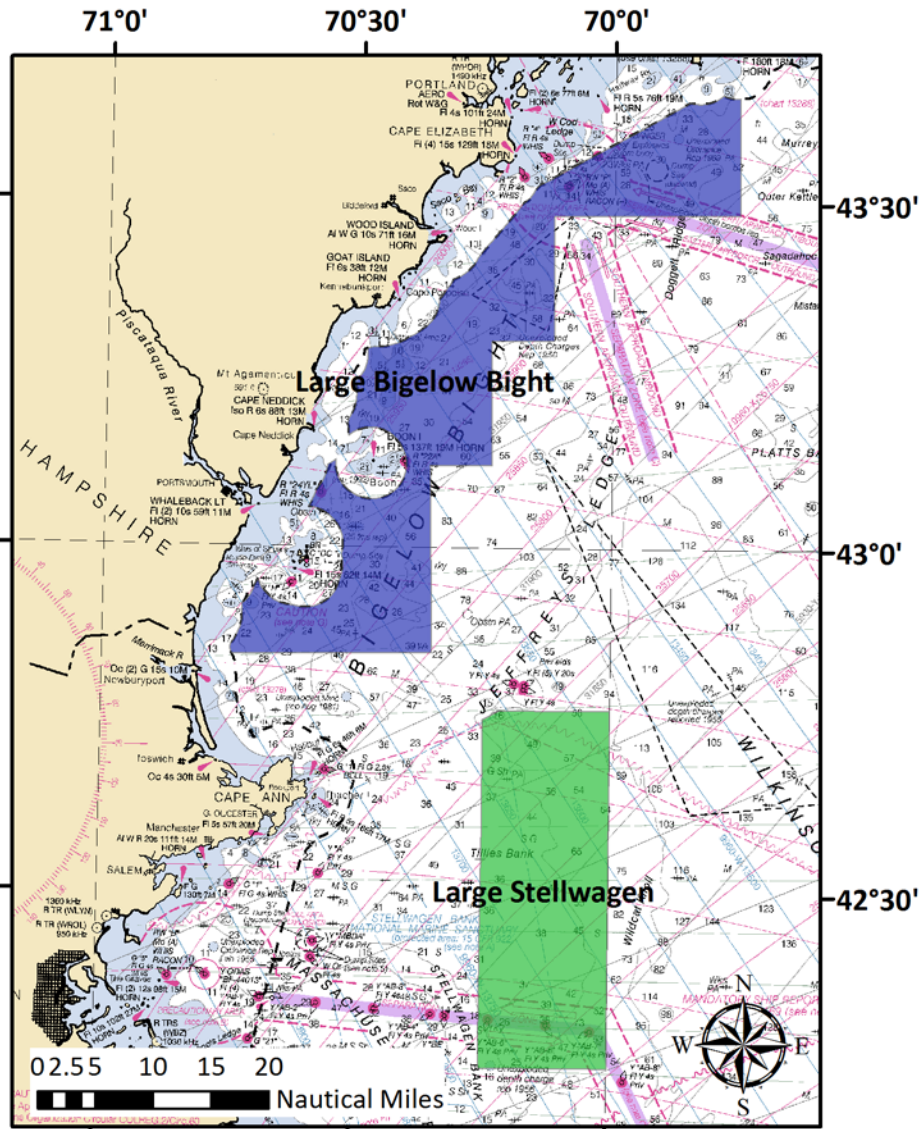
Central GOM Habitat Management Alternative 4 (Preferred)

Western GOM Habitat Management Alternative 1 (No Action, Preferred)



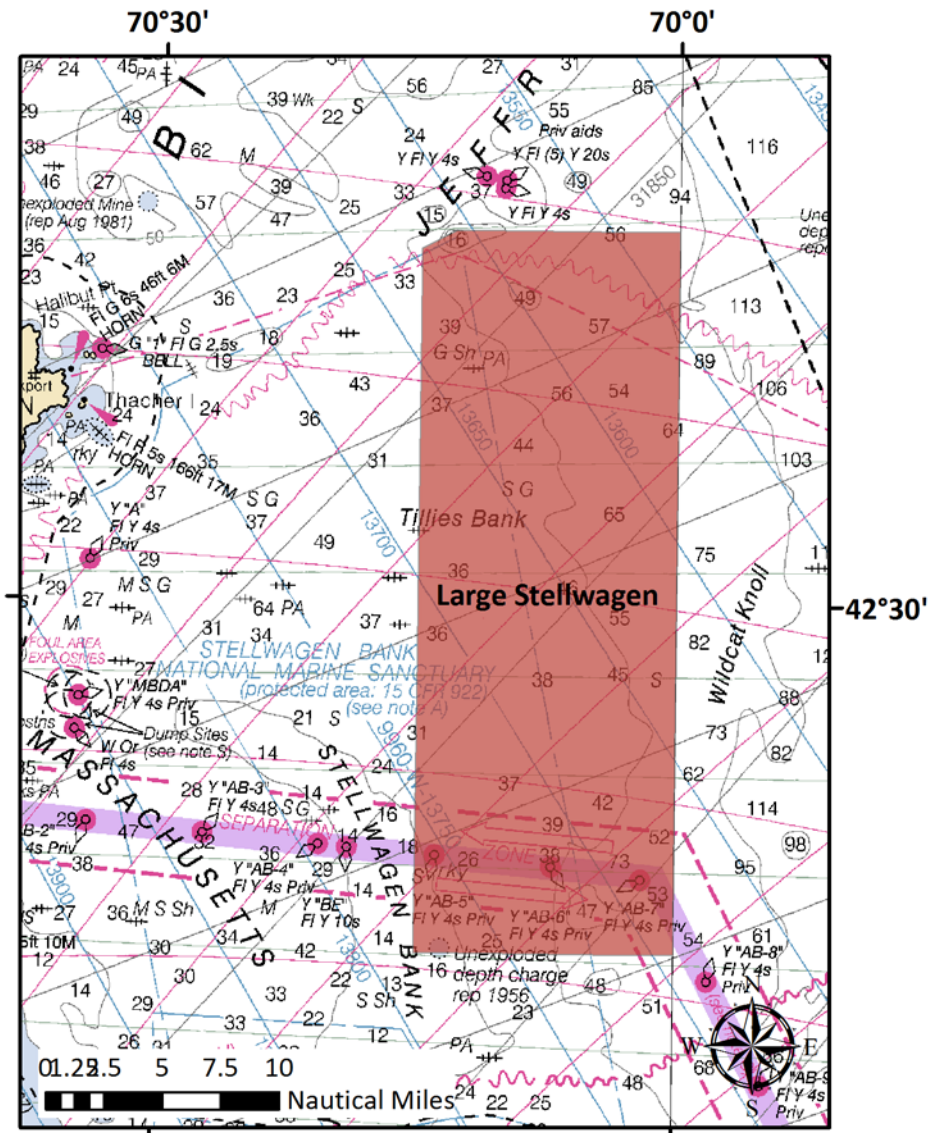
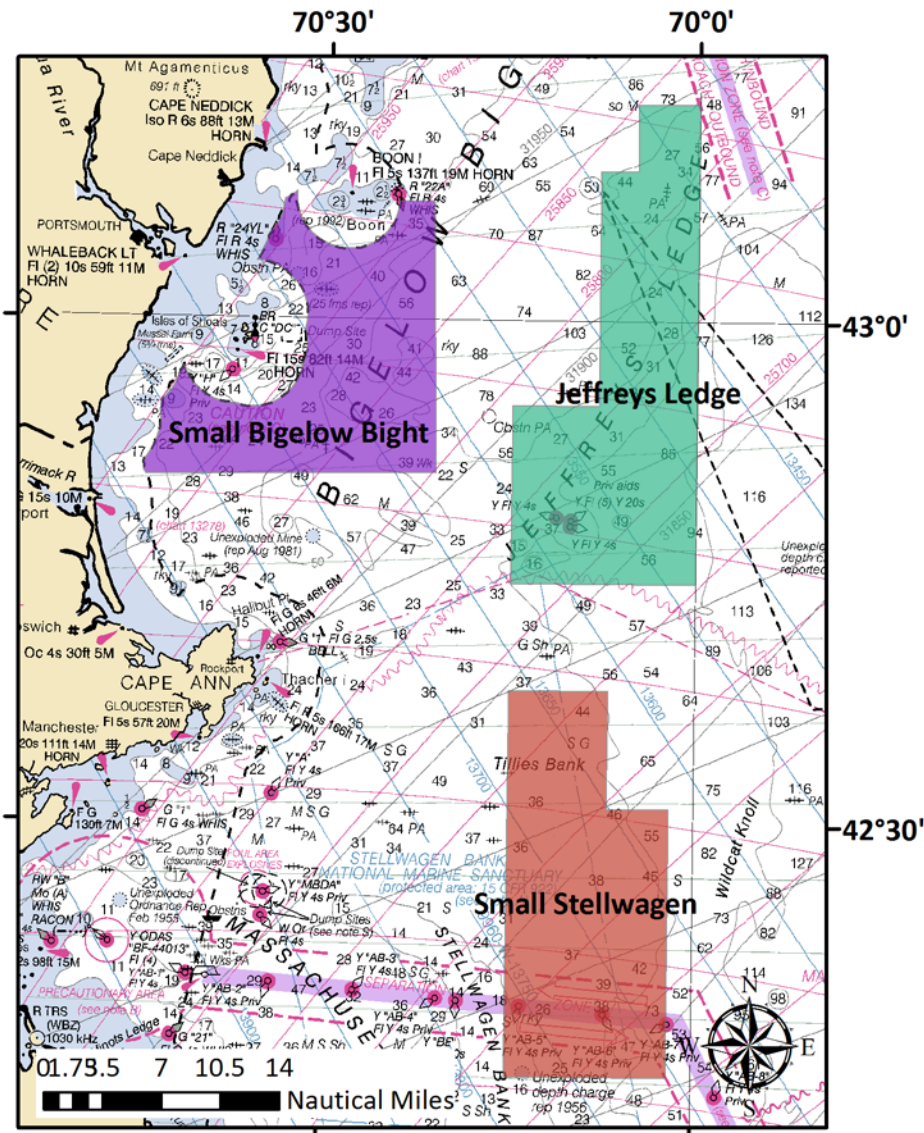
Western GOM Habitat Management Alternative 3

Western GOM Habitat Management Alternative 4



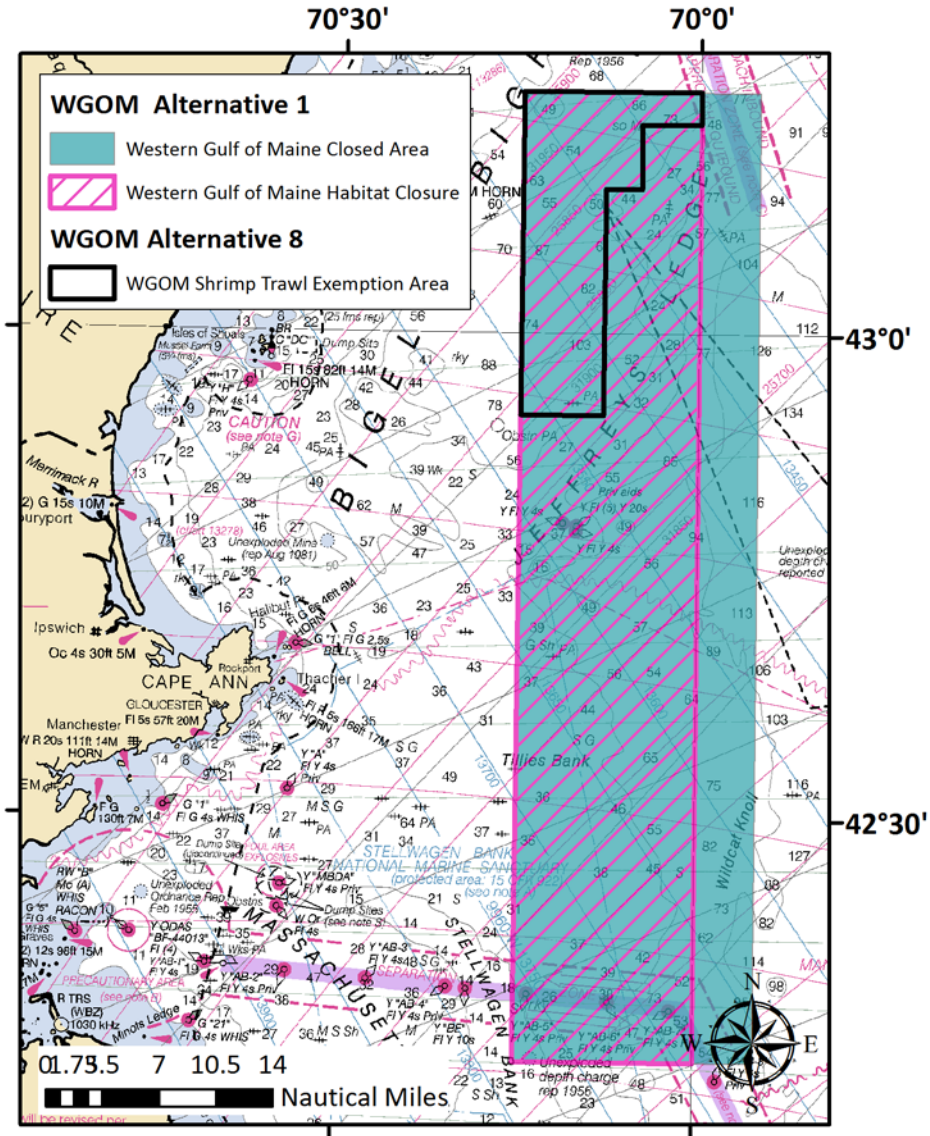
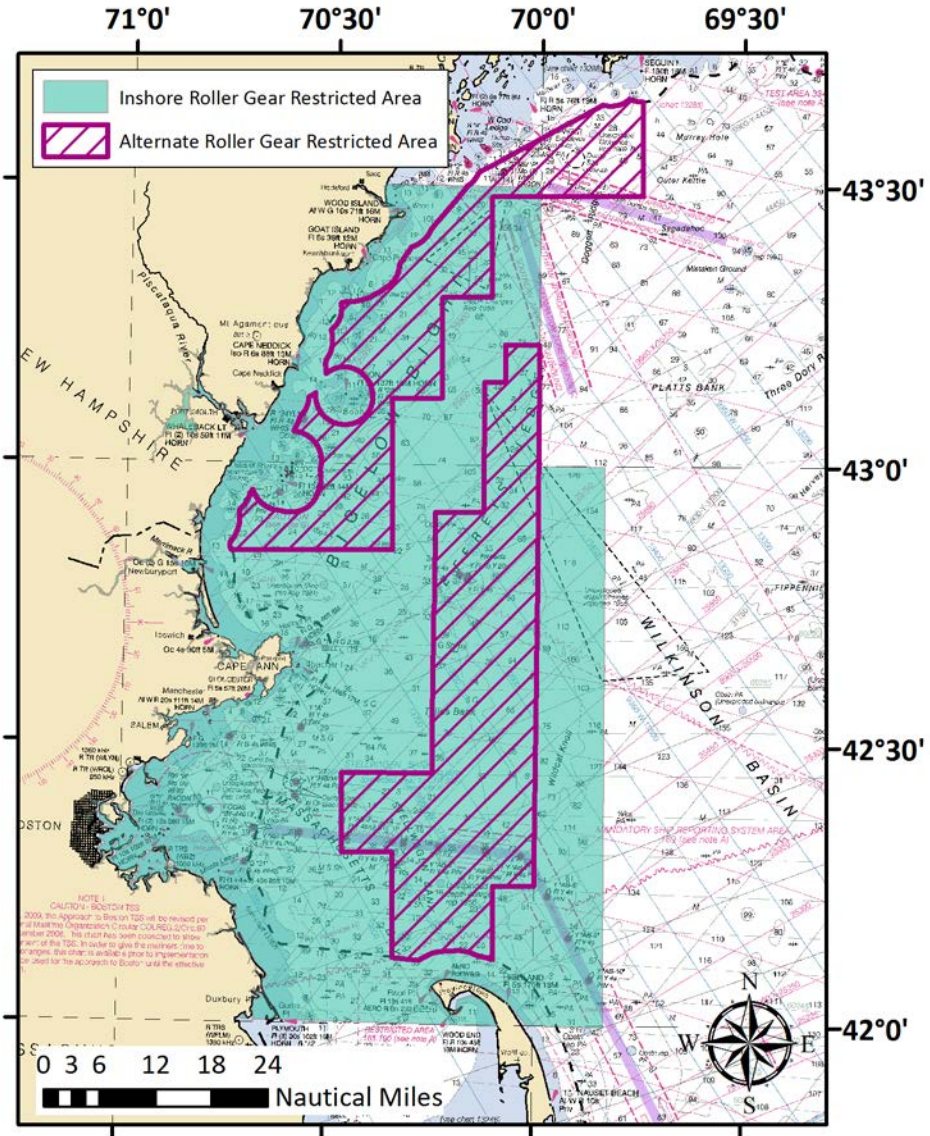
Western GOM Habitat Management Alternative 5

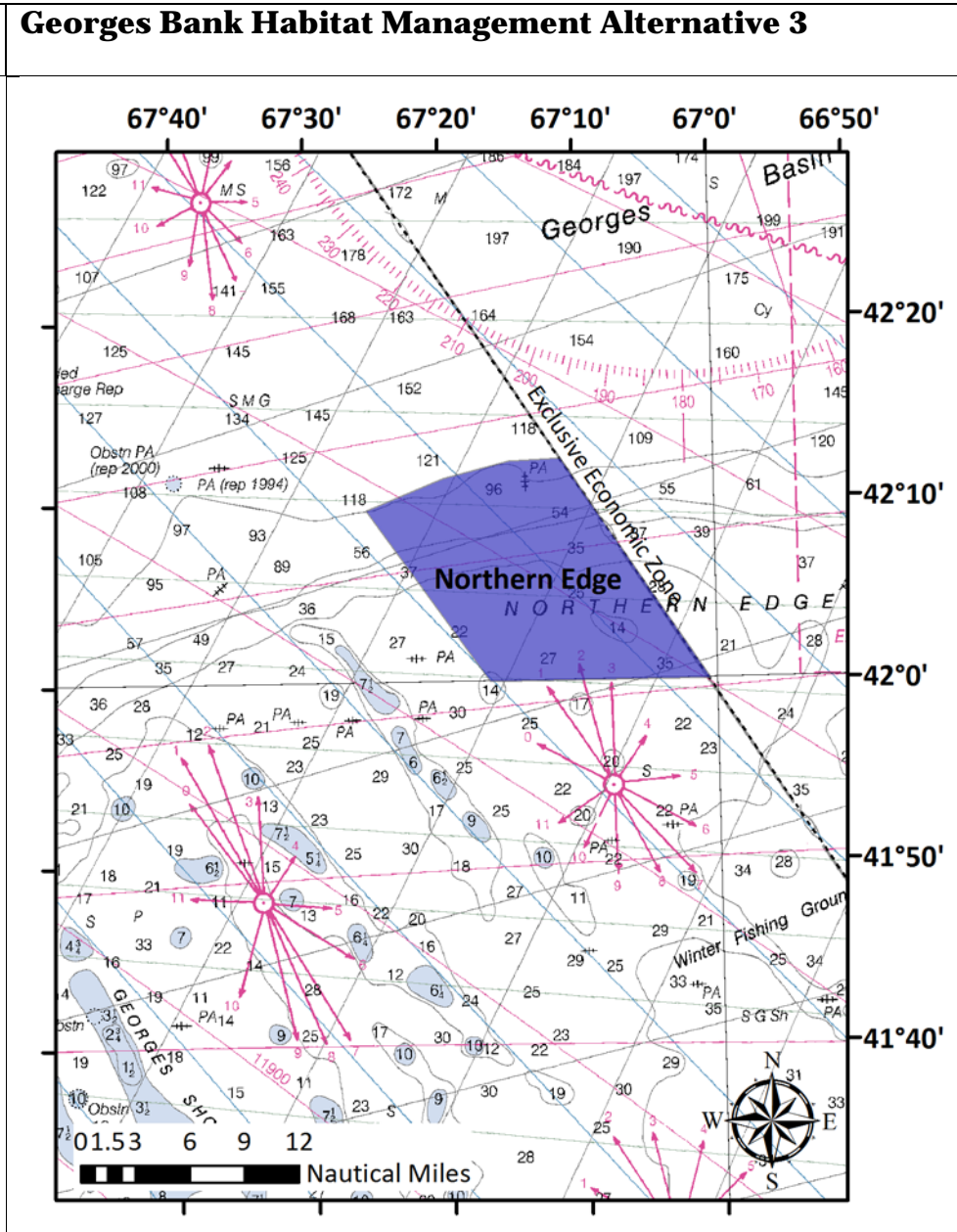
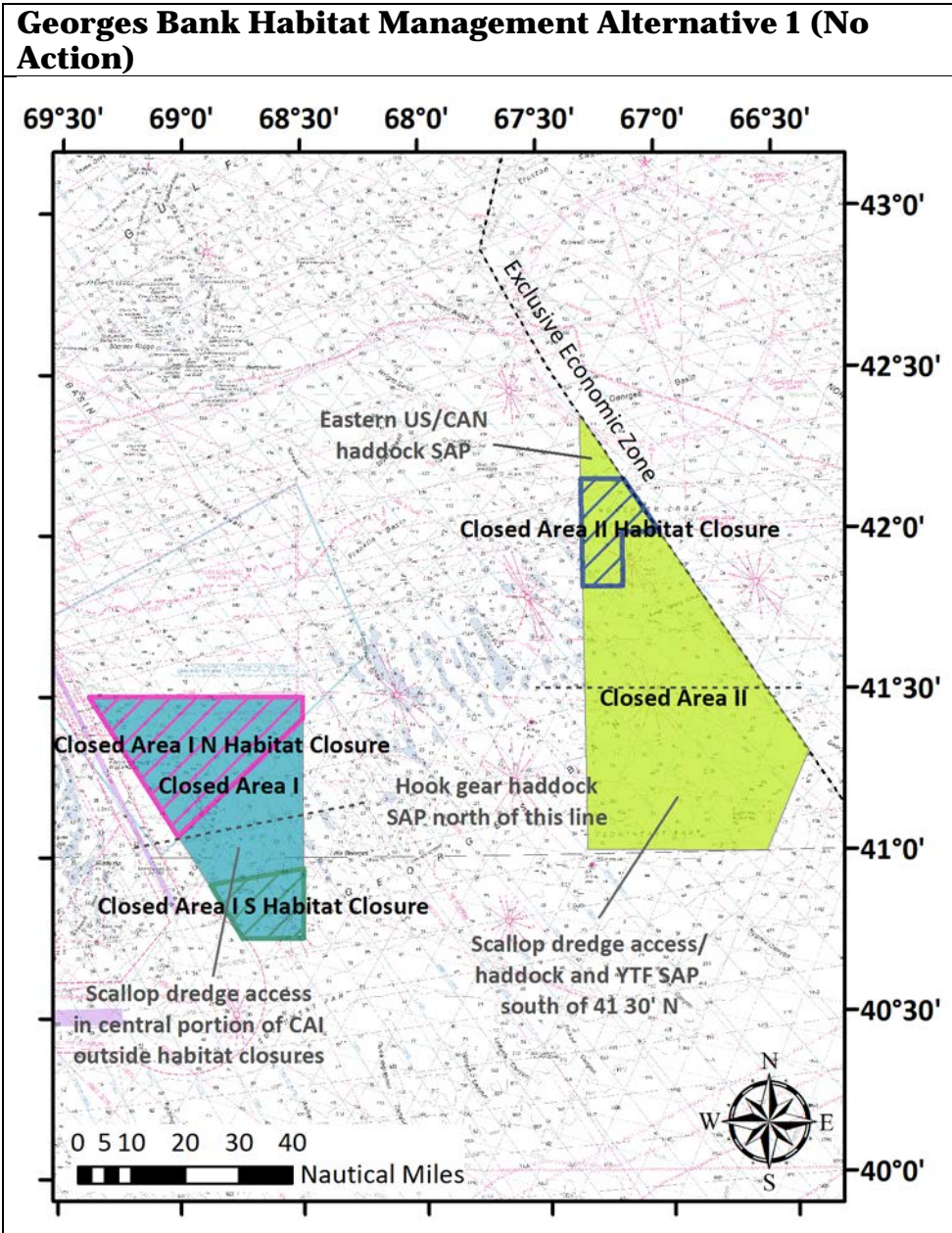
Western GOM Habitat Management Alternative 6



**Western GOM Habitat Management Alternatives 7A, 7B
(7A green shaded preferred)**

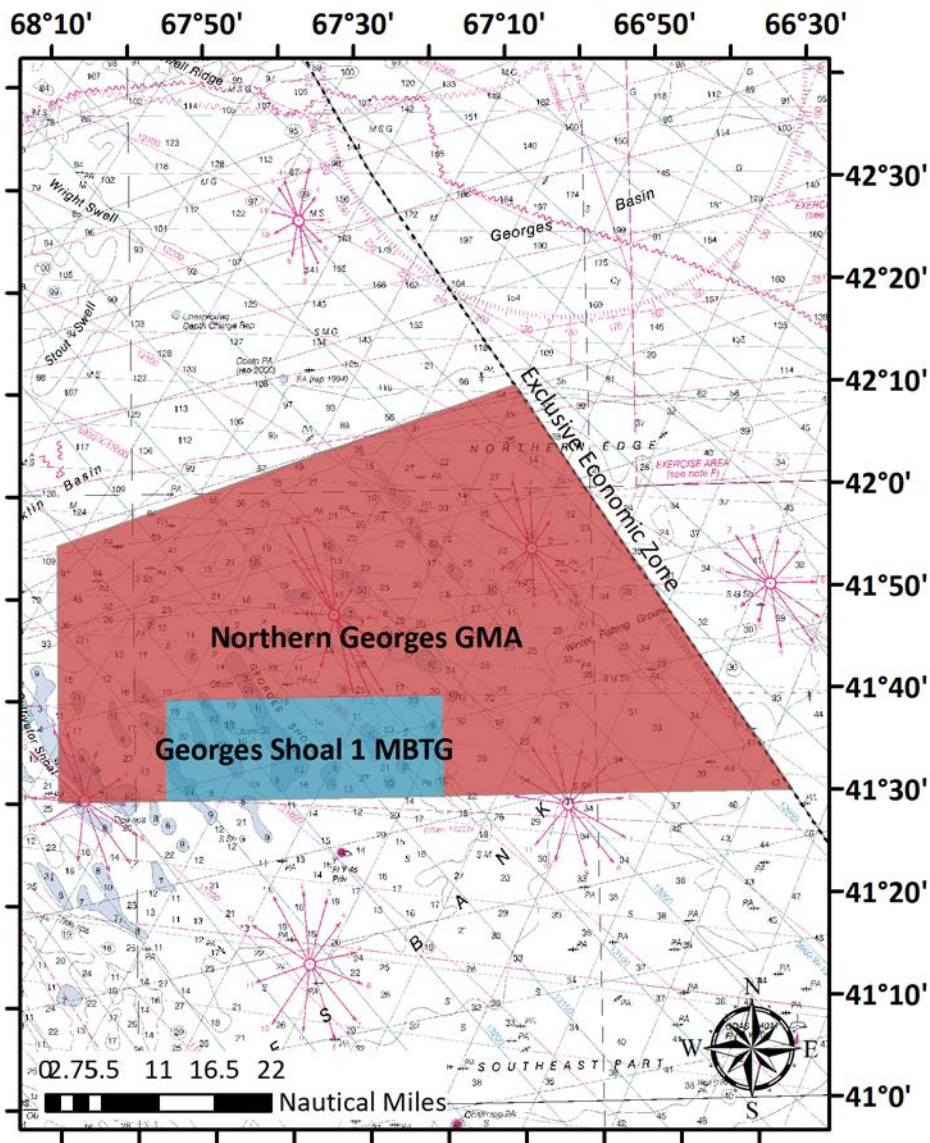
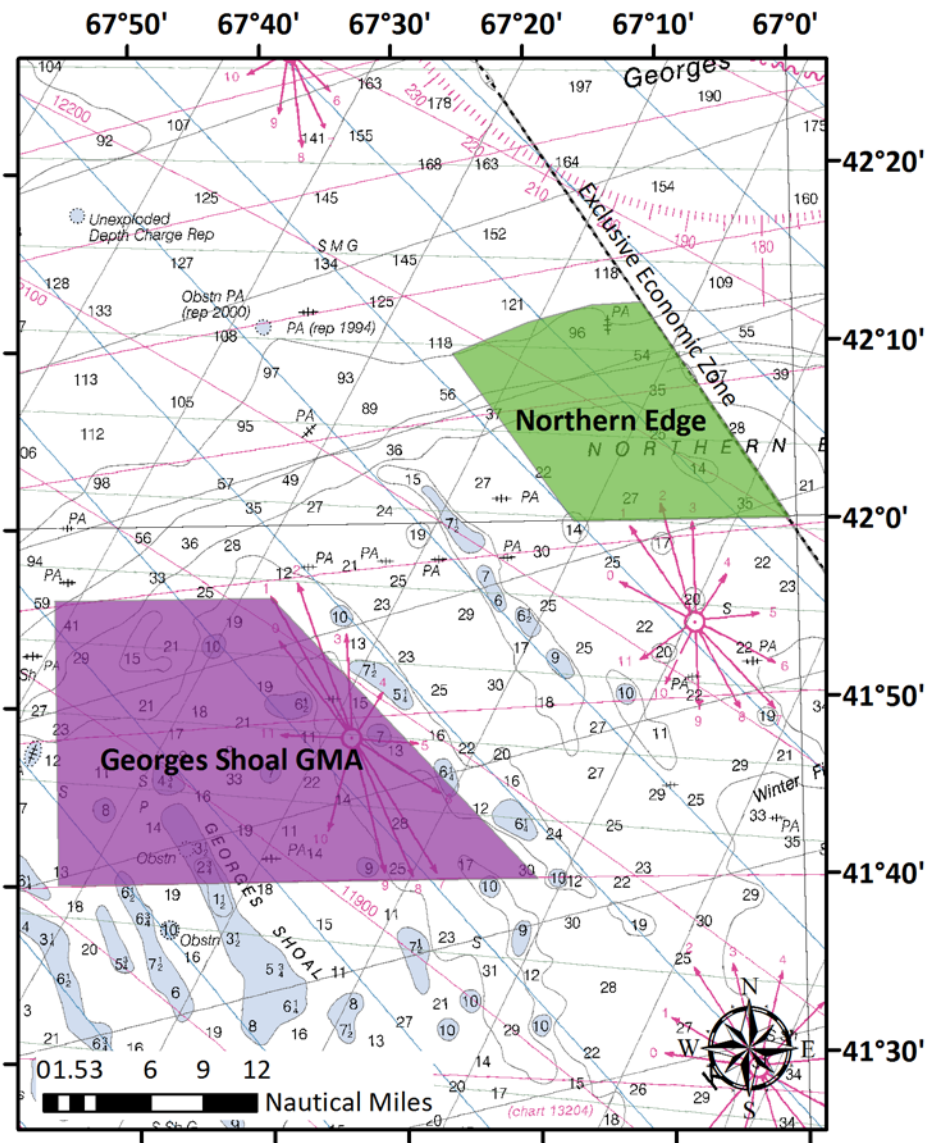
**Western GOM Habitat Management Alternative 8
(Preferred)**

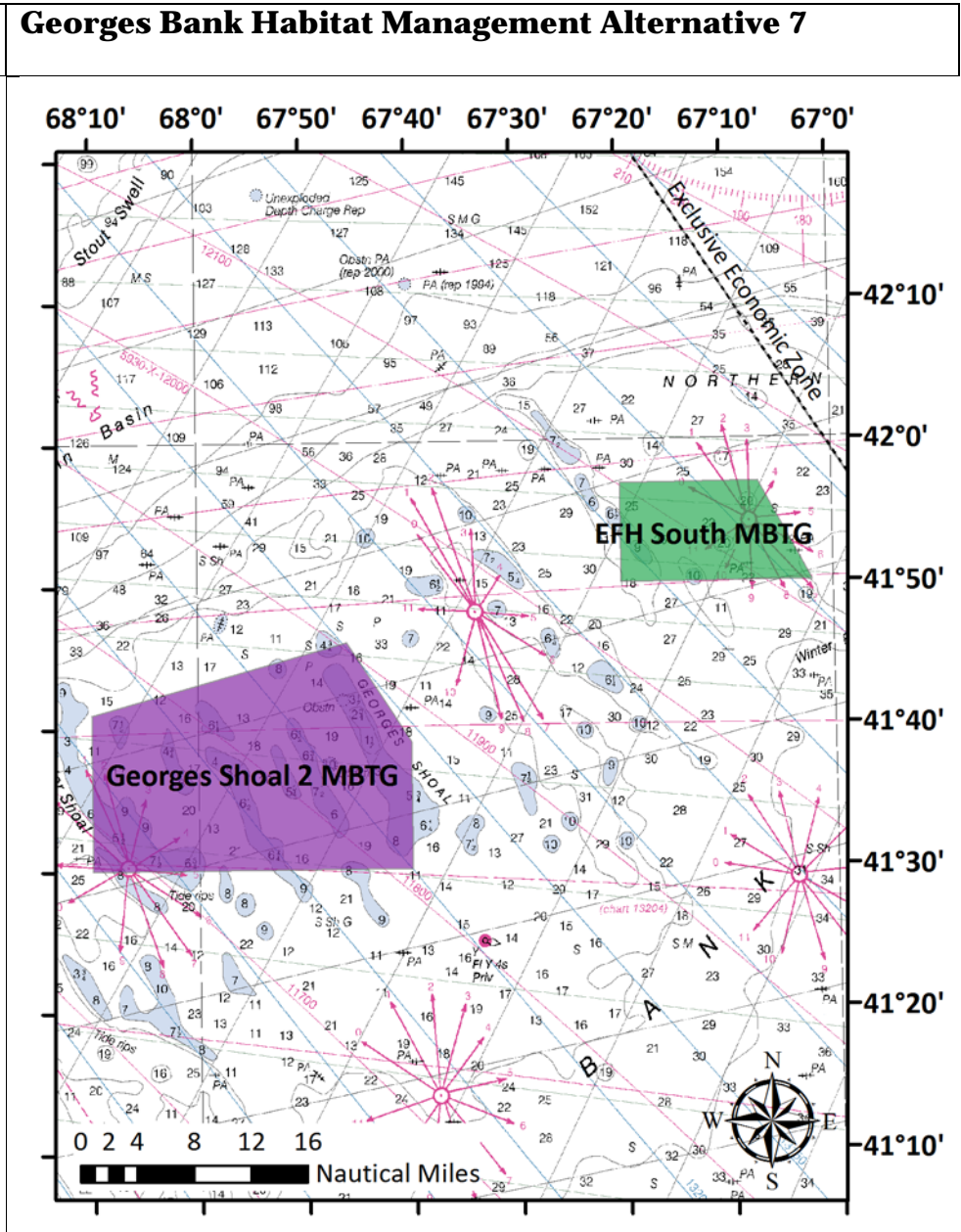
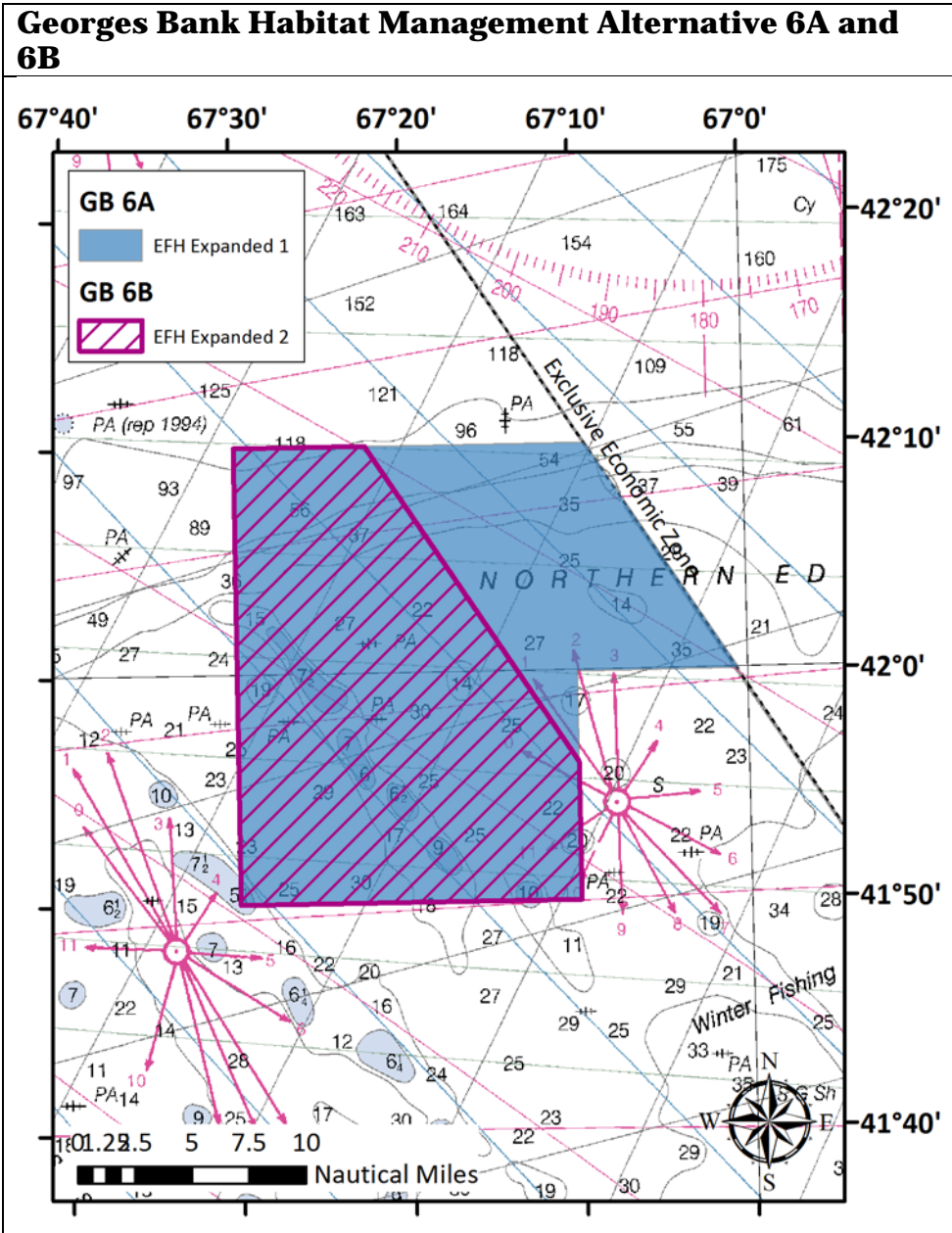




Georges Bank Habitat Management Alternative 4

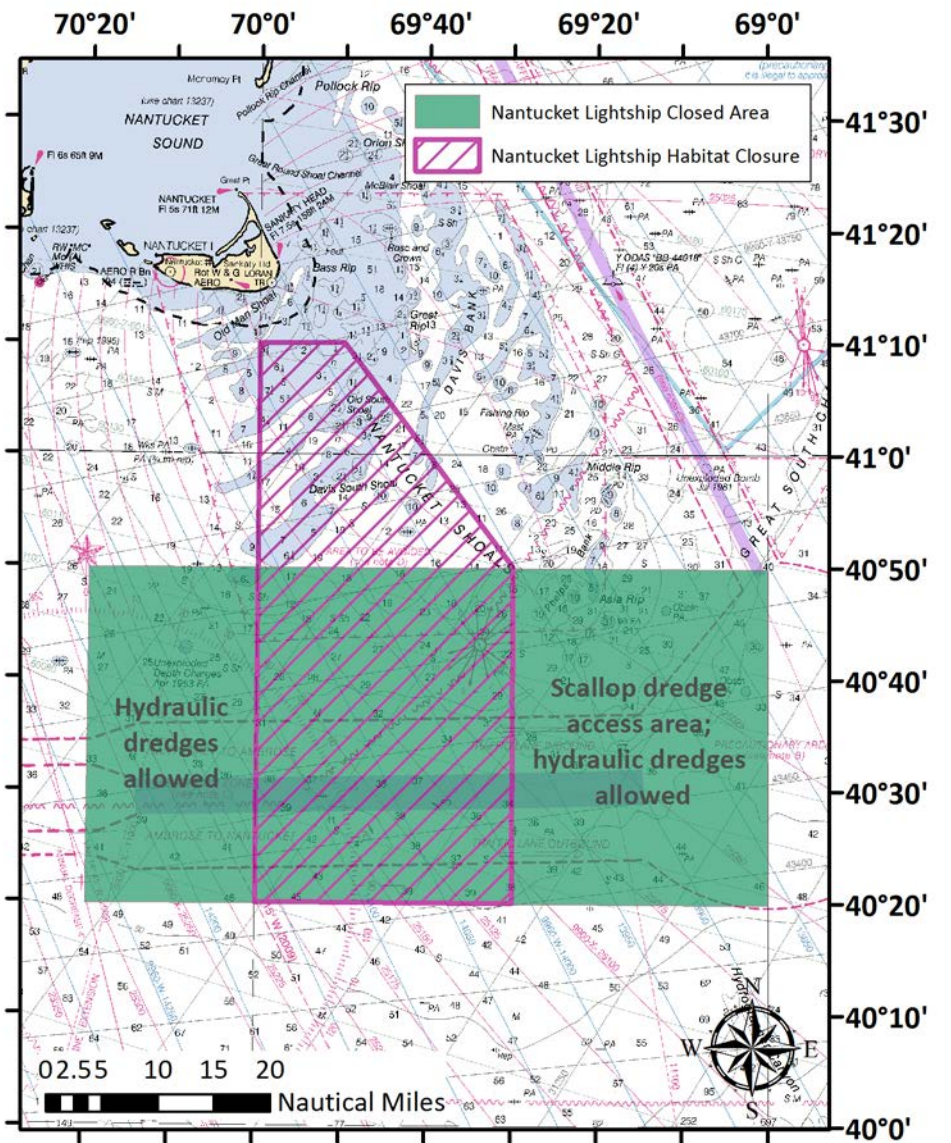
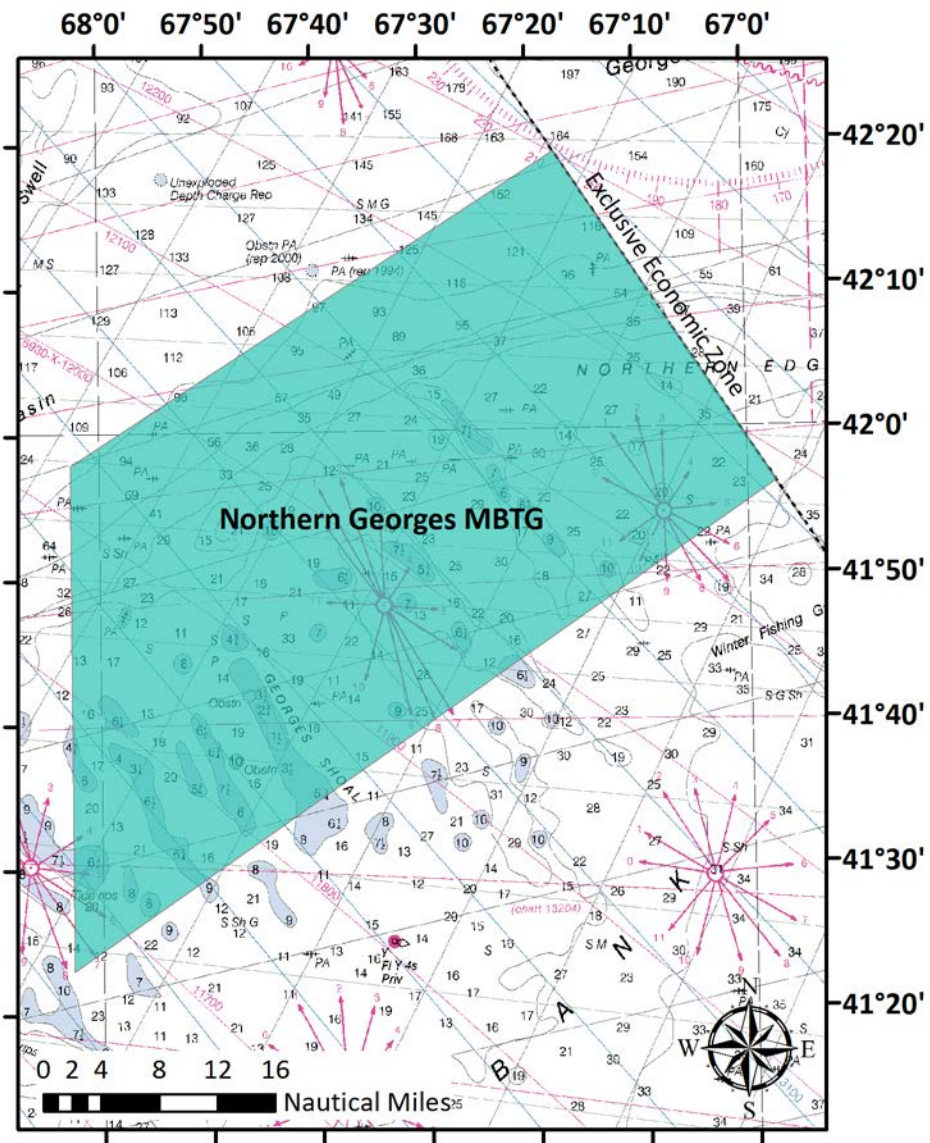
Georges Bank Habitat Management Alternative 5





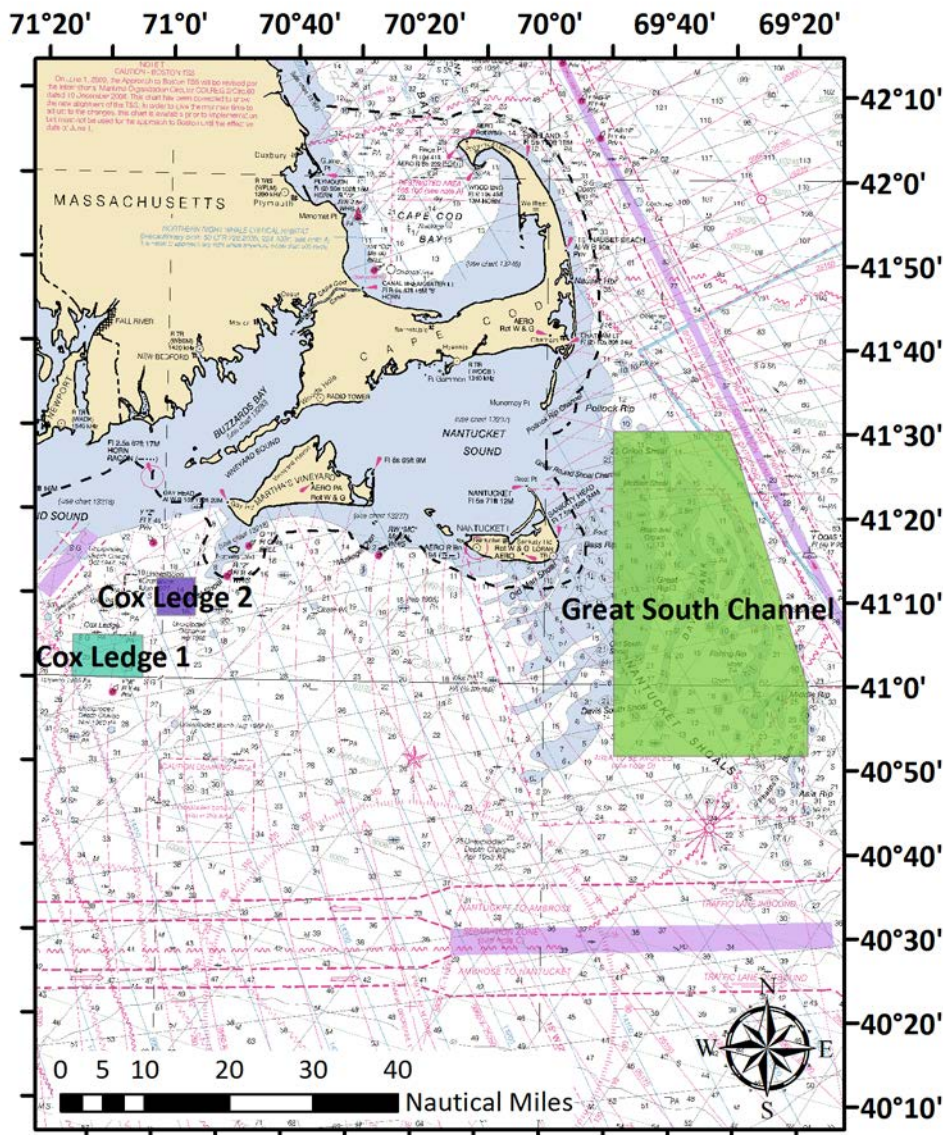
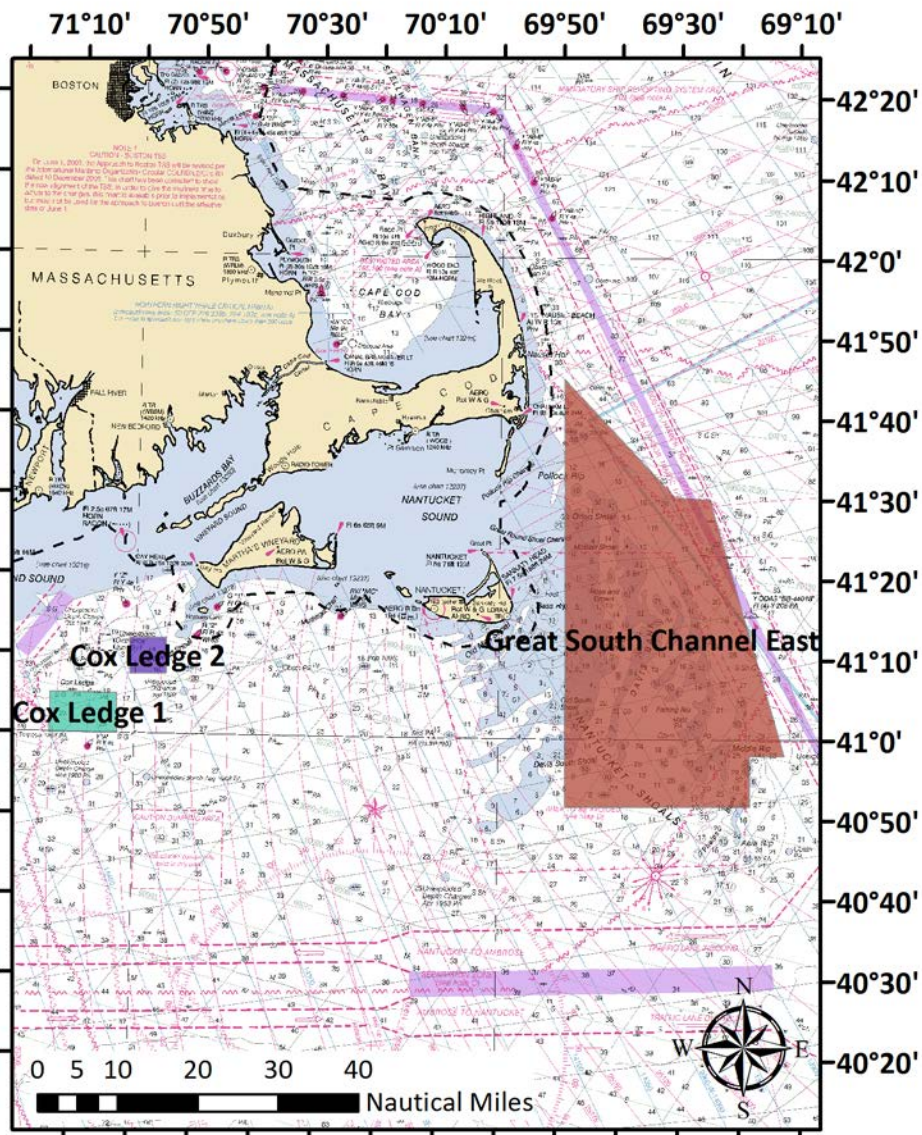
Georges Bank Habitat Management Alternative 8

GSC/SNE Habitat Management Alternative 1 (No Action)



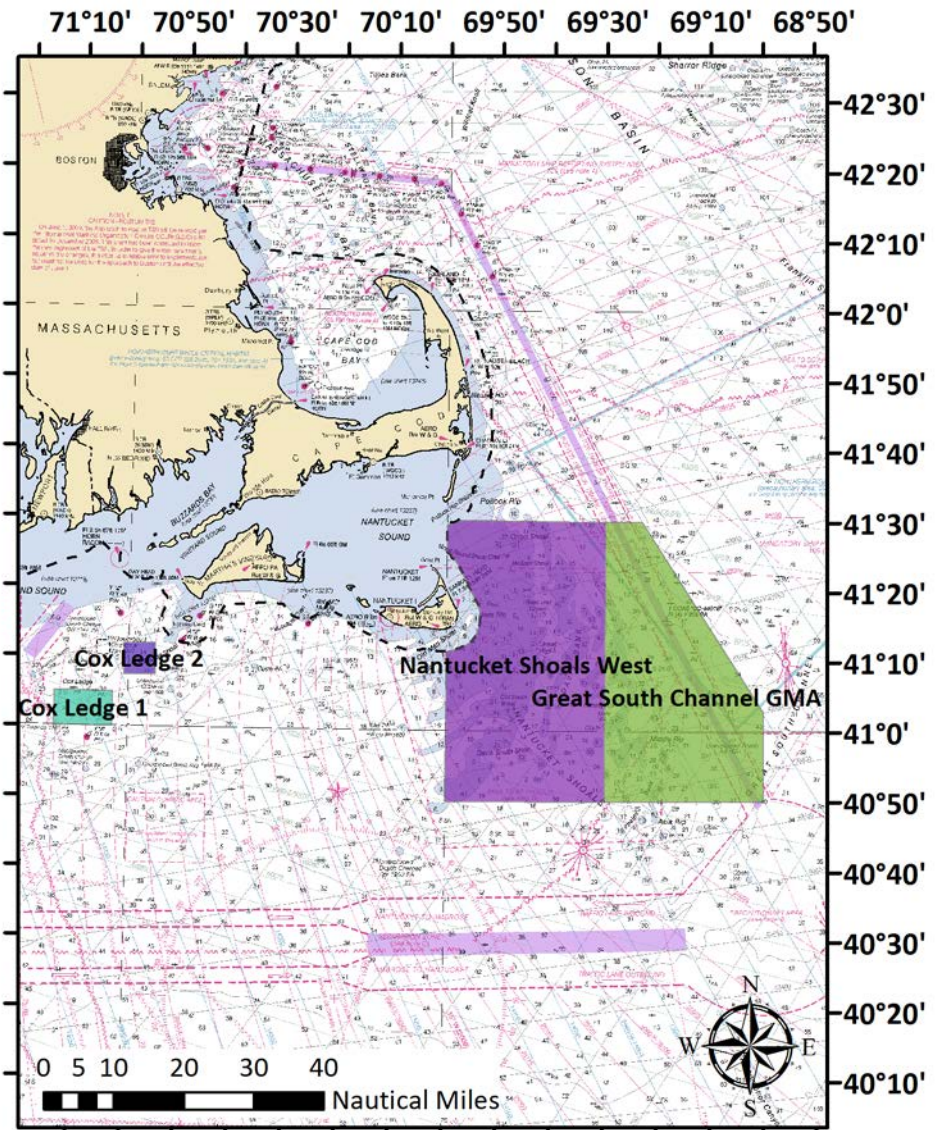
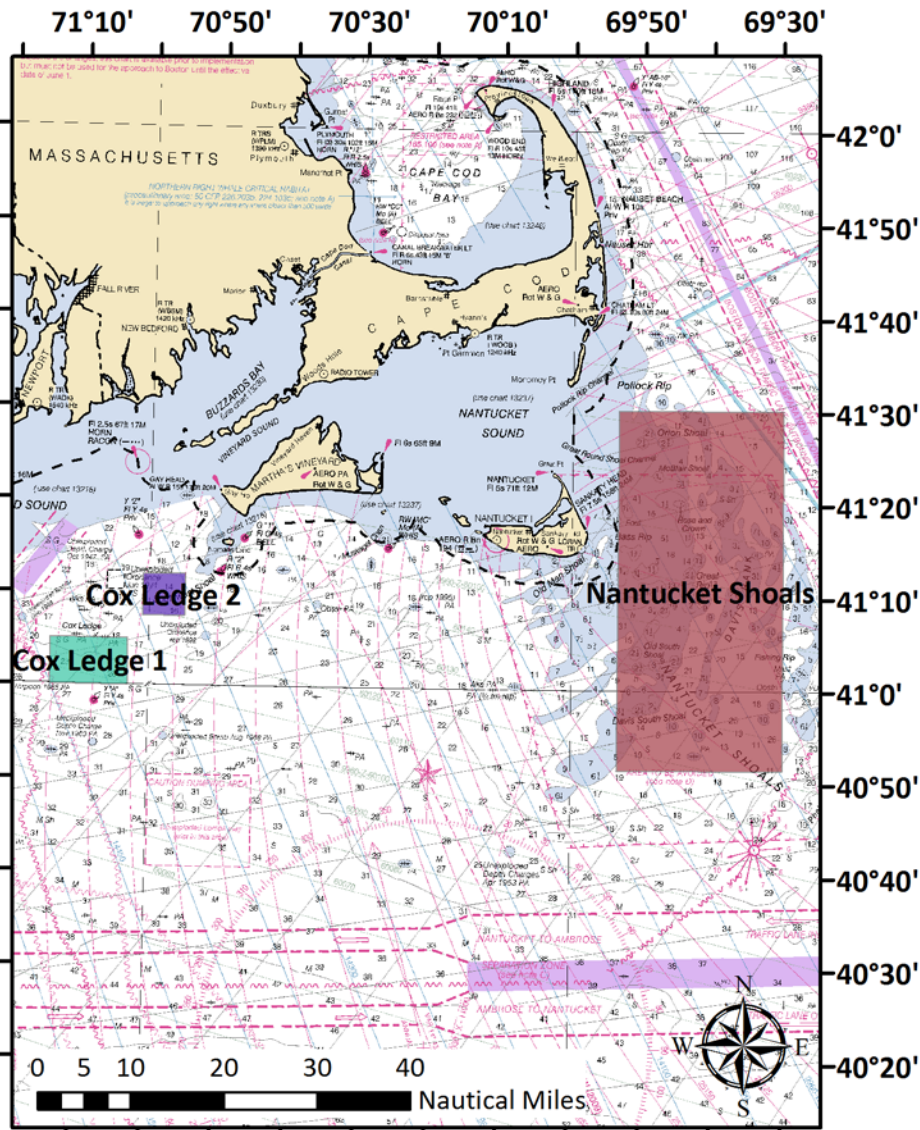
GSC/SNE Habitat Management Alternative 3

GSC/SNE Habitat Management Alternative 4



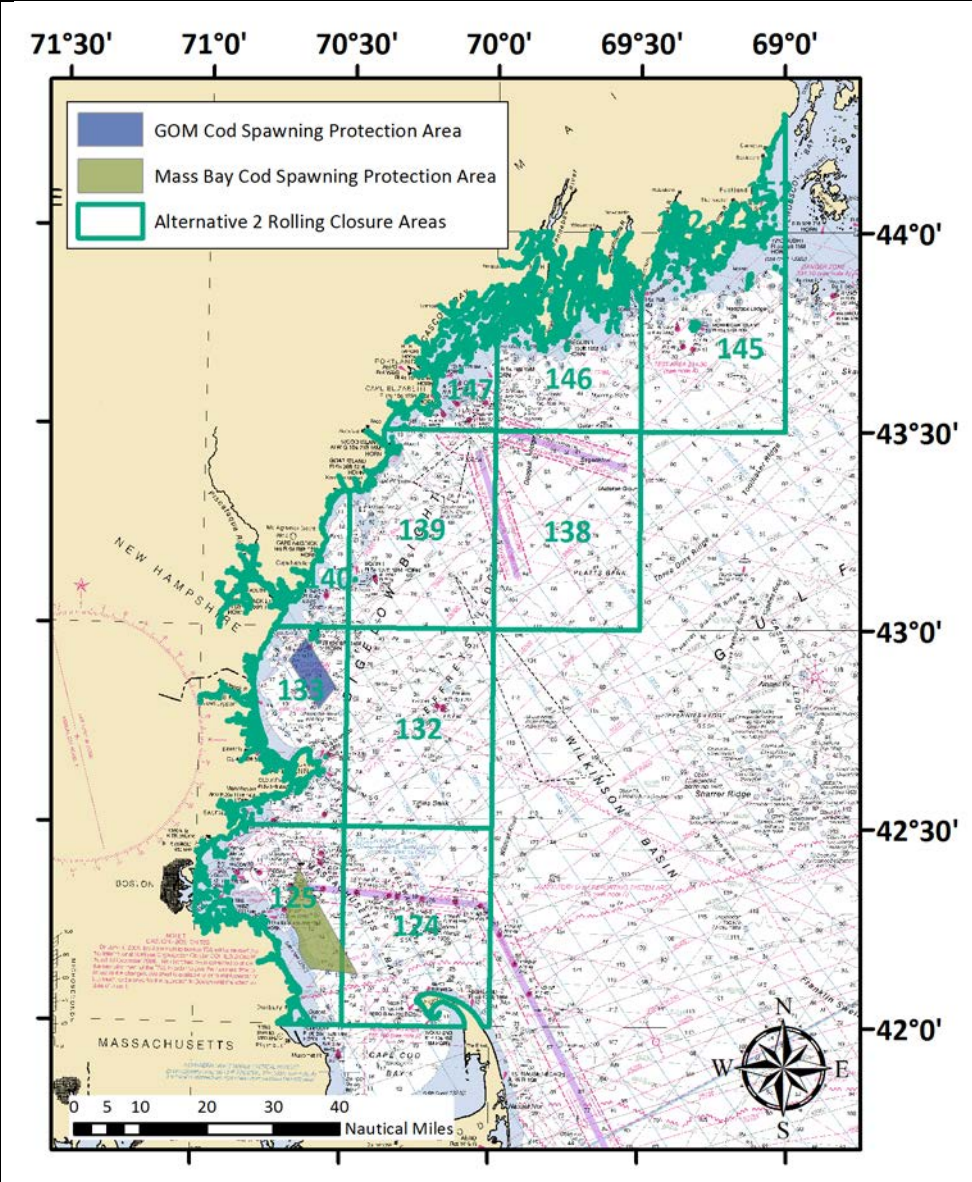
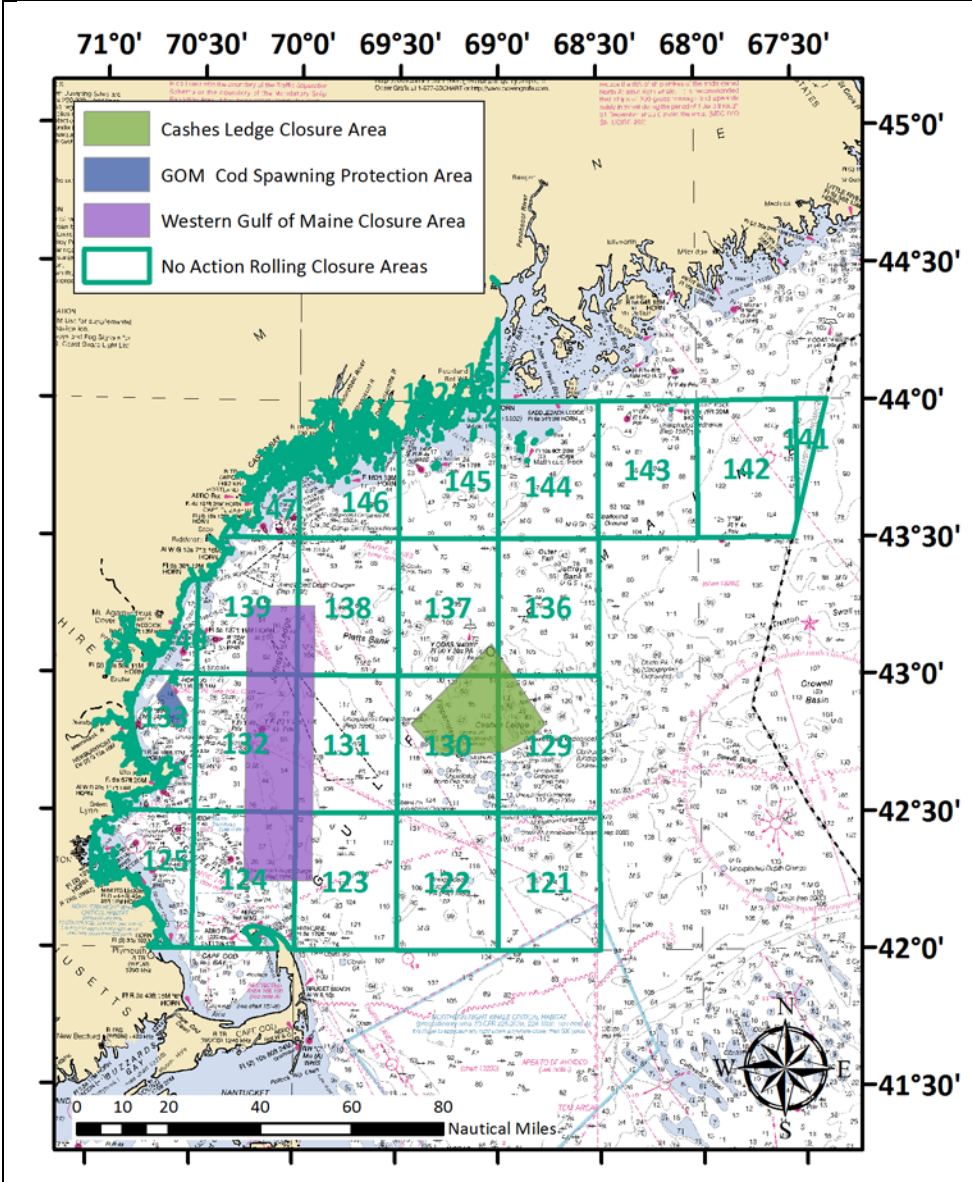
GSC/SNE Habitat Management Alternative 5

GSC/SNE Habitat Management Alternative 6



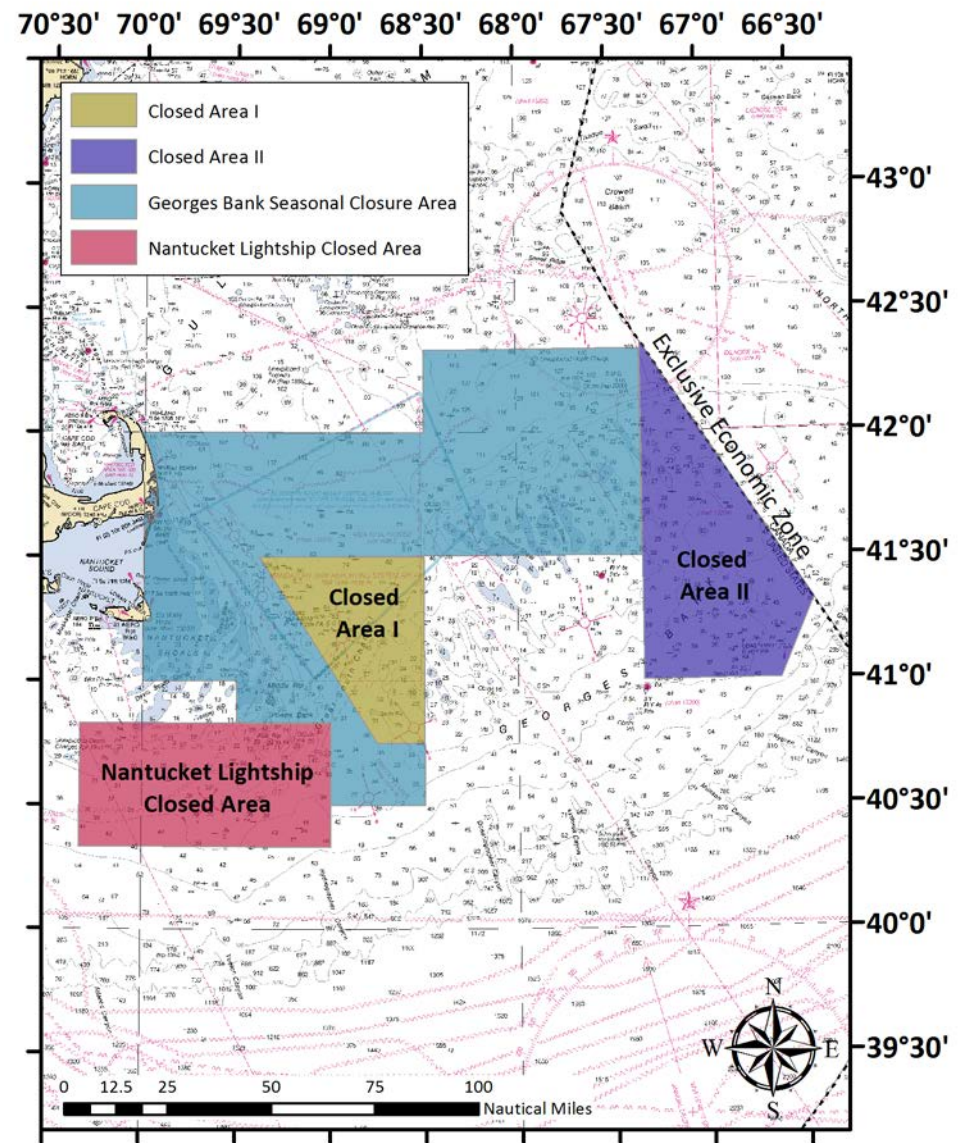
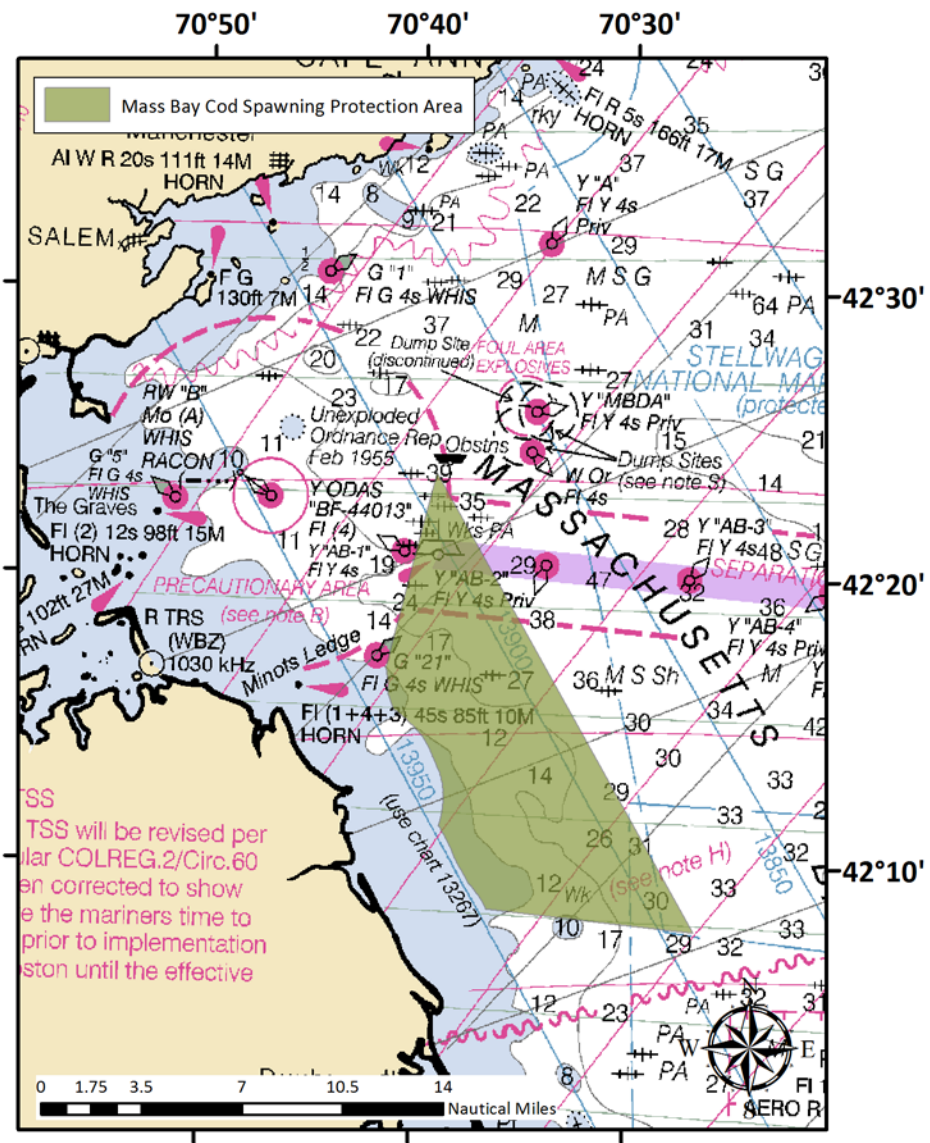
GOM Spawning Management Alternative 1 (No Action, Preferred)

GOM Spawning Management Alternative 2



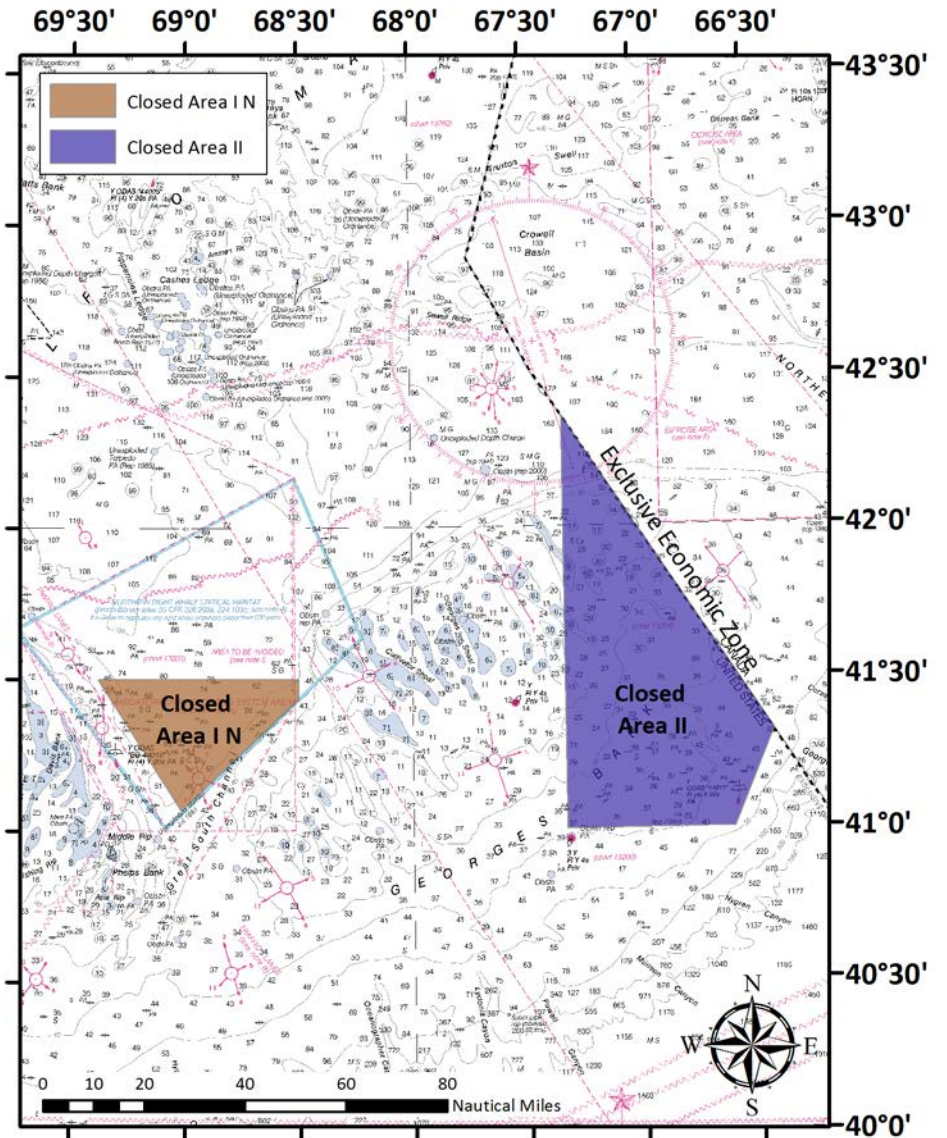
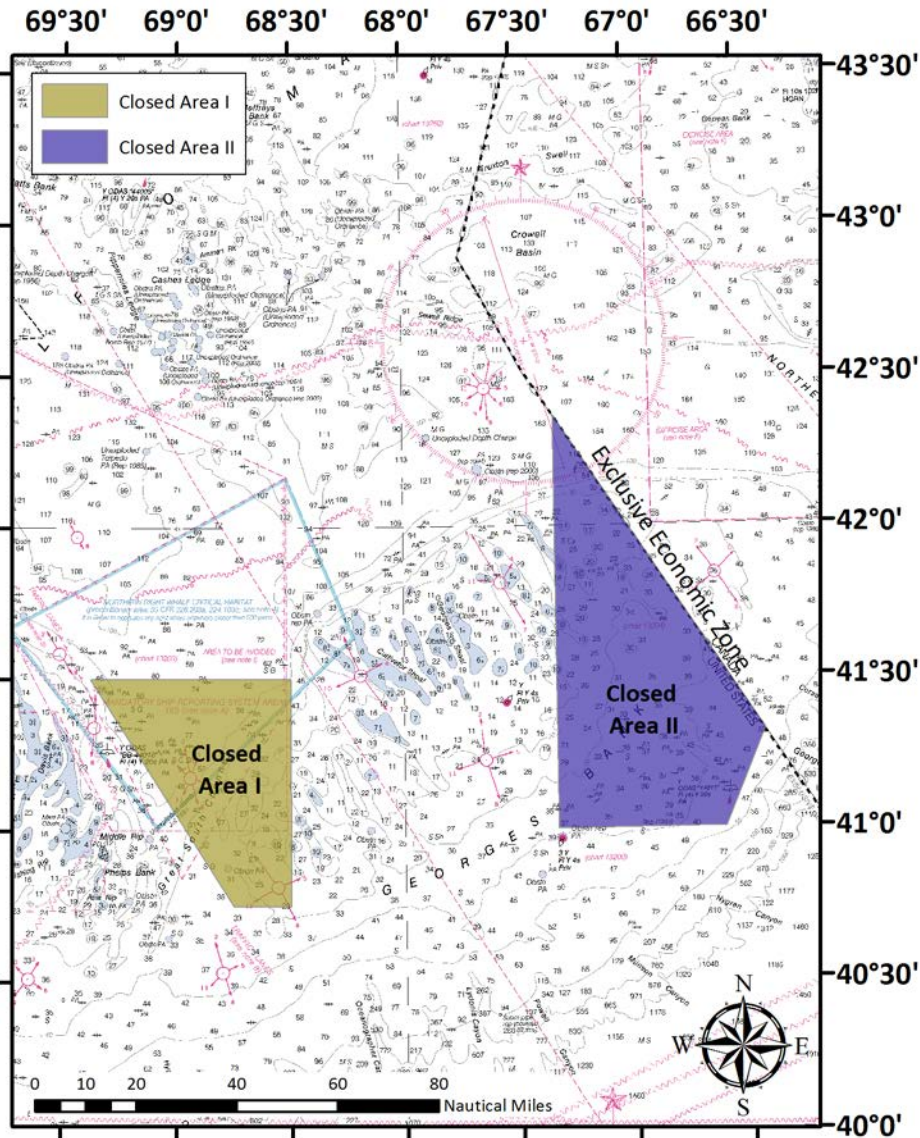
GOM Spawning Management Alternative 3 (Preferred)

GB/SNE Spawning Management Alternative 1



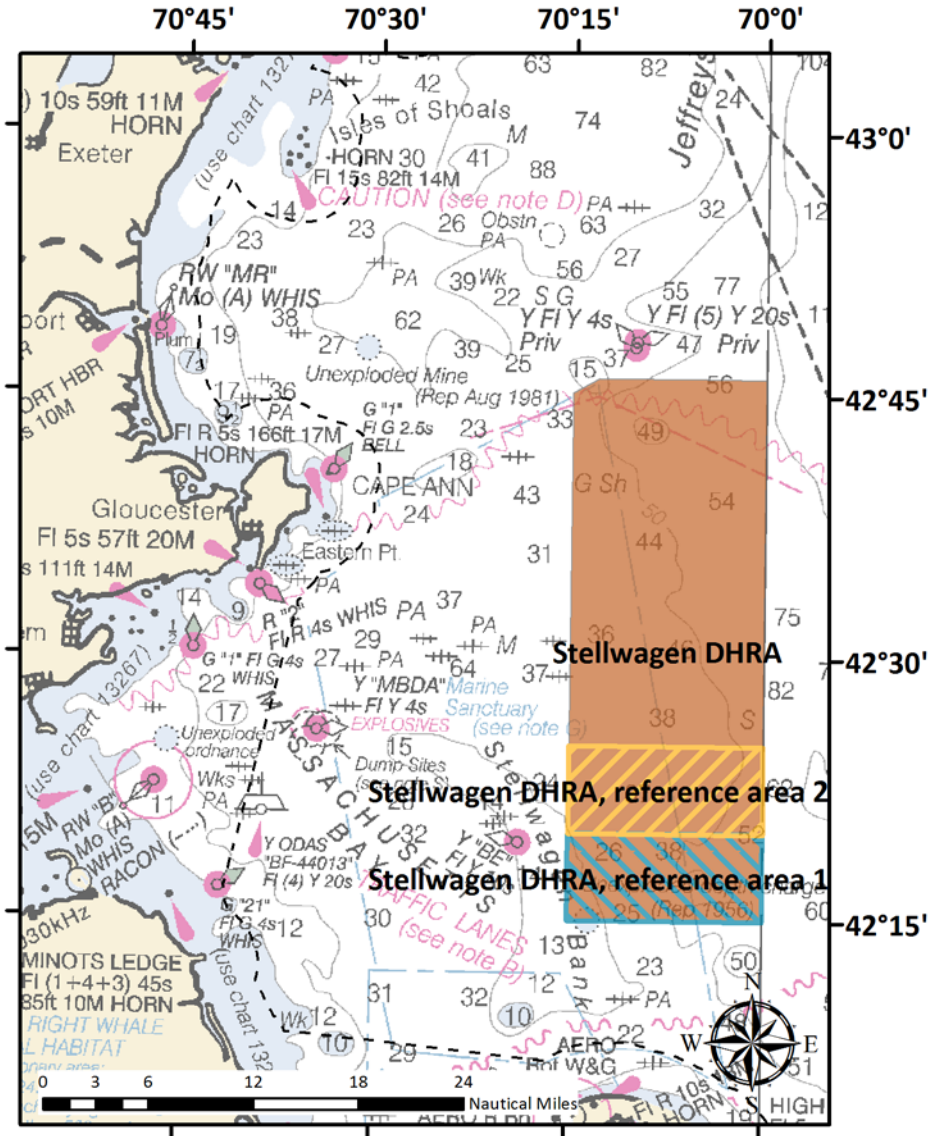
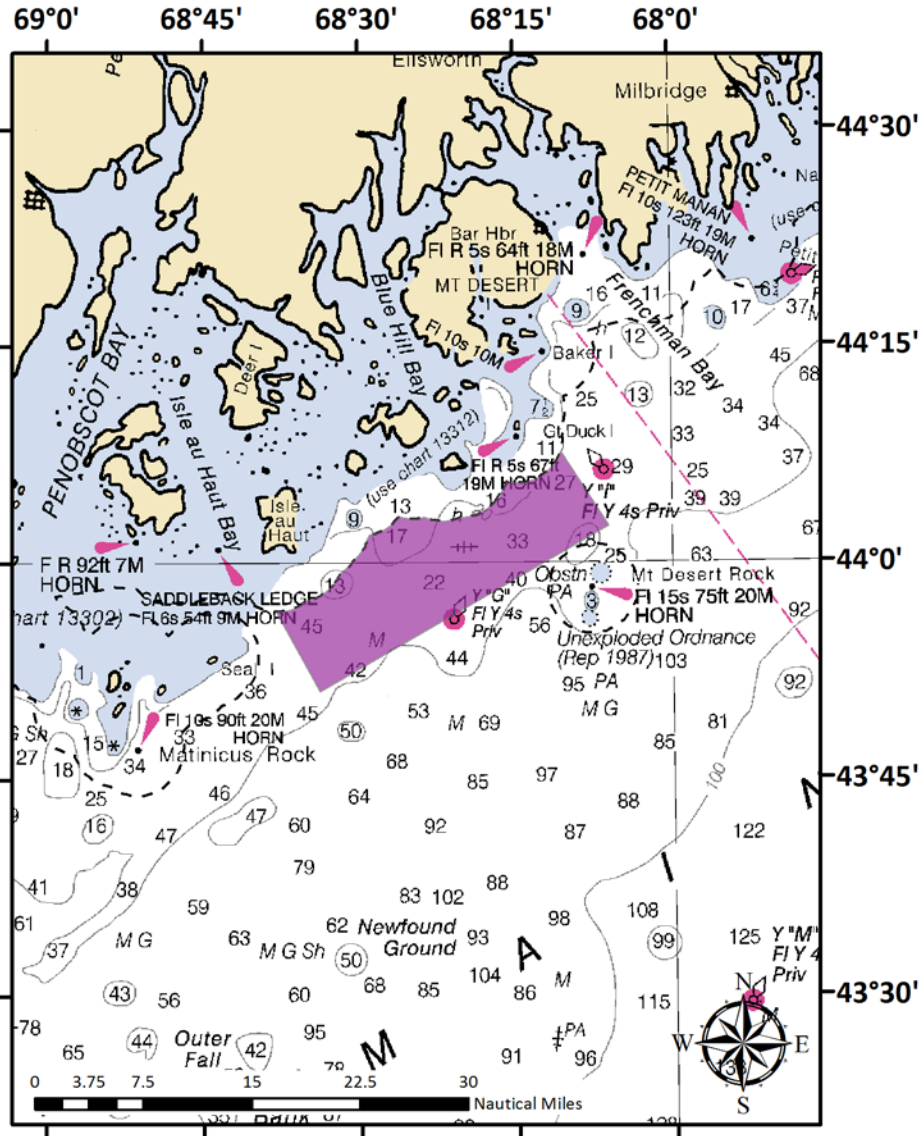
**GB/SNE Spawning Management Alternative 2
(Preferred)**

GB/SNE Spawning Management Alternative 3



**Dedicated Habitat Research Area Alternative 2
(Preferred)**

**Dedicated Habitat Research Area Alternatives 3A, 3B, 3C
(Preferred 3B with reference area 2)**



**Dedicated Habitat Research Area Alternative 4
(Preferred)**

